

FB2100 Flow Computer

The FB2100 is a cost-effective low-power field mount flow computer that measures and monitors gas flow for a differential or linear meter run.

The FB2100 is part of Emerson's new field mount flow computer family that delivers a convenient approach to remote oil and gas sites by addressing challenges to power, safety, measurement reliability and accuracy.

Designed for simple configuration and ease of use, the cost effective FB2100 flow computer focuses on metering applications where control is not required. The FB2100 provides a full audit trail, including enhanced history, alarm and event logs. The I/O options can be as simple as a single discrete output (DO) for driving an odorizer or can be expanded to give two user configurable analog (AI or AO) channels and two user configurable discrete (DI, DO or PI) channels. The FB2100 includes power options for remote sites and flexible communication capabilities for both remote and SCADA connected sites.

The new flow computers also come with the latest Rosemount™ multivariable measurement sensor technology, providing high accuracy differential pressure and static pressure measurement with long term stability to help measurement confidence and production efficiency.

Features

The FB2100 flow computer includes the following key features:

- Increased measurement confidence and reduced measurement uncertainty
- Measurement and I/O capability focused on metering applications
- Industry leading differential and static pressure measurement including 5-year stability
- High accuracy temperature measurement including curve matching via the Callendar-Van Dusen equation
- Reduced need to re-calibrate resulting in less time spent on site
- Simplified configuration and set-up with the FBxConnect™ configuration software tool
- Flexible design with configurable I/O power and communication options to meet site needs
- Standard firmware supports global calculations for orifice, cone, Venturi, nozzle, conditioning orifice, turbine, PD, Auto-Adjust, and Coriolis
- Simple selection of engineering units suits local requirements
- Global Hazardous Area Approvals – Class 1 Div2, ATEX & IECEx nA
- Corrosion resistant aluminum and fiberglass enclosure options include radio mounting bracket and battery box for solar use

- Mobile SCADA allows secure local wireless access from safe area
- Ease of integration with support for Modbus, ROC, BSAP and DNP3 protocols
- Enhanced security helps prevent unauthorized access
- Enhanced alarming and historical data storage and improved audit trail
- Superior performance gives better control of your operations and maximizes profits
- API 21.1 compliant

Mobile SCADA™ with Wi-Fi®

The optional Mobile SCADA™ with Wi-Fi® communications enables you to connect your laptop or tablet to the flow computer through a secure wireless connection. Once connected wirelessly, you can use FBxConnect™ configuration software to view process values, edit configuration parameters, and collect logs stored in the flow computer – all from within the safe area.



FB2100

Firmware

The base firmware in the FB2100 flow computer measures static pressure, differential pressure or pulse frequency, and temperature for a single meter run. The flow computer performs gas flow calculations based on those inputs in either U.S., metric, or other user-selectable units based on the calculation type.

The firmware supports the following flow calculations:

- AGA 3 1992/2013 (volume, mass/density, and mass/relative density)
- ISO 5167 1991/1998/2003 (orifice, Venturi, and nozzle)
- Rosemount 405C Compact Orifice and 1595 Conditioning Orifice Plate
- McCrometer V-Cone® and Wafer Cone®
- NUFLO™ Cone
- AGA 7 2006 (pulsed turbine, PD, and ultrasonic)
- AGA 11 2013 (Coriolis pulses)
- Auto-Adjust™ meter

The firmware supports the following property calculations:

- AGA 8 1994 (Detailed, Gross 1, and Gross 2)
- NX-19 1962, MOD, VDI/VDE 2040
- ISO 12213 2009 (parts 2 and 3)
- SGERG 1991 (Std., Alt1, Alt2, and Alt3)
- GPA 2172 2009 (including saturated vapor calculation)
- ISO 6976 1995 (superior and inferior, incorporating Technical Corrigendum 2 [1997] and 3 [1999])

Regarding gas composition, the flow computer can:

- Receive updated gas composition from SCADA;
- Receive manual updates for gas composition through FBxConnect; or
- Use a fixed gas composition

The firmware includes the following flow totals:

- Indicated volume
- Corrected (standard) volume
- Mass
- Energy

The firmware supports a fallback mode when a process variable's value is questionable. The fallback options can be one of the following:

- Use last good value
- Use a fixed fallback value

Alarms and Events

The flow computer supports extensive alarming capability to enhance operational efficiency and improve the audit trail. Alarms are pre-allocated to meter runs for standard values such as pressure, temperature, differential pressure or frequency as well as meter run flow rates. In addition to these standard alarms, the FB2100 provides a number of user alarms that you can assign to other database

parameters simply by “filling in the blanks” in user alarm templates in the FBxConnect configuration tool. Storage is provided for the most recent 1000 alarms in the alarm log.

The event log stores the significant events during operation and can be configured to either store all events in a single log of 2000 events or the user can select to store the metrology/legal events in a separate log from the operational events. With the latter option the event log capacity is 1000 metrology events and 1000 operation events.

History

The FB2100 features expanded and flexible history capability to ensure measurement confidence and meet the increasing demands for secure data.

The flow computer has four standard periodic logs available providing hourly, daily, weekly, and monthly history. These logs can contain up to 35 variables including flow weighted average data, totals, and gas composition. For averaging, the FB2100 supports either flow weighted or flow dependent which can be linear or formulaic.

The FB2100 can store the following:

- | | |
|----------------|-----------|
| ▪ Hourly logs | 62 days |
| ▪ Daily logs | 12 months |
| ▪ Weekly logs | 12 months |
| ▪ Monthly logs | 60 months |

The flow computer also supports two user periodic logs, the duration or period of each is user selectable between 1 minute and 200 hours. The first user periodic logs include 10 parameters over 4,000 periods and the second contains 20 parameters over 500 periods.

The flow computer with FBxConnect provides pre-formatted EFM reports for hours and days. The format of the reports can be .csv, .pdf or secure pdf.

In addition to the above reports, the flow computers can produce FLOWCAL-compliant .cfx files through the FBxConnect tool as well as calibration reports which contain U.S. Bureau of Land Management specific parameters.

Power Options

You can power the FB2100 with an external DC power supply or from an internal rechargeable battery linked to a solar system. The internal battery can power the device for up to 45 days depending on the application.

Note: The internal battery option is available only with Class 1 Div 2.

Housing Options

The FB2100 has two housing options both suitable for hazardous area installation. The corrosion resistant Aluminum and the Fiberglass enclosures each protect the electronics from physical damage and harsh environments.

The enclosures include a battery box to house a rechargeable battery for use with solar systems and an optional radio mounting bracket. The lockable door also provides a viewing window for the optional LCD. The door can also be fitted with an optional security switch, to generate an alarm each time the door is opened.

Hazardous Area Certifications

The FB2100 has the following Global Hazardous Area Approvals:

- North American certification for Class I Division 2 Groups A, B, C and D.
- ATEX and IECEx certification for Ex nA, Zone 2 hazardous locations.

Configuration Software

Emerson's new FBxConnect™ tool is a Microsoft® Windows®-based tool that enables you to easily monitor, configure, service, and calibrate the FB2100 flow computer. Designed for ease of use, FBxConnect provides at-a-glance monitoring, quick access to commonly performed tasks, and a guided configuration process to quickly get your measurement up and running.

The wizard-driven approach simplifies configuration and ensures that you only need to enter the required data once. Whether you are an experienced engineer or a new technician, you can be confident configuration is done correctly the first time.

FBxConnect runs on a Windows PC or tablet, you connect securely to the flow computer using one of its serial ports or optionally through the Mobile SCADA wireless connection. For more information, refer to product data sheet FBxConnect (D301789X012).

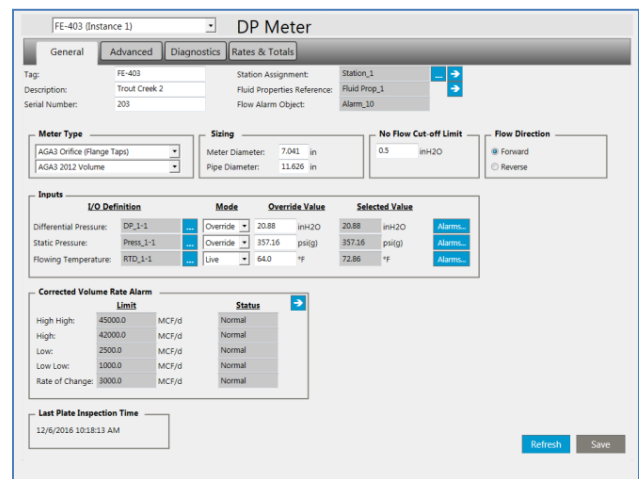
Security

To secure your valuable process and data, the FB2100 provides multi-level role-based access, user account authentication, and password encryption.

The system administrator can set a minimum password length (up to 20 characters) that accommodates lower case, upper case, numbers, and symbols, as well as configure a user lock-out feature that locks out invalid users after a defined number of failed login attempts.



Monitor Screen



DP Meter

Integral Pressure Sensor Options

The flow computer can be supplied with one of three sensor options to suit your metering needs:

- Integral Multivariable Sensor (MVS) measuring both Static Pressure and Differential Pressure (DP)
- Integral inline static pressure sensor
- NO integral pressure sensor – external transmitters are used

The NO integral sensor option is typically used at locations where regulations classify the location of the pressure measurement sensor as either C1 D1 or ATEX/IEC Exd Zone 1. In this instance, the FB2100 without an integral sensor can be mounted in the C1 D2 / Zone 2 area and be connected via a serial port to a remote 4088B MVT transmitter.

Enabled by superior sensor technology and engineered for optimal flow performance, the integral pressure sensor on the flow computer delivers unparalleled accuracy, over a wide range of operating conditions, and industry leading stability to ensure you meet standards and regulations.

Pressure sensors on the flow computer can measure DPs of up to 1000" of water / 2500 mBar and static pressures up to 4000 psi / 275 Bar in either gauge or absolute with accuracies up to 0.075%.

Temperature Input (RTD/PRT)

With industry leading measurement accuracy the temperature measurement of the FB2100 ensures that you minimize your measurement uncertainty in all operating conditions. The input accepts 2-, 3-, or 4- wire connections reducing any field wiring induced errors and also supports sensor curve matching utilizing the optional Callendar-Van Dusen constants to define the unique characteristics of the RTD/PRT to further improve process temperature measurement uncertainty.

The FB2100 flow computer's superior static pressure, DP, and temperature measurement performance and stability ensures you meet standards and regulations so you can avoid fines, penalties, leaseholder disputes, and lost revenue.

Inputs and Outputs

Base I/O

In addition to the integral pressure sensor, the FB2100 includes the following I/O points in the base unit:

- One discrete output (DO)
- One RTD/PRT (2-, 3-, or 4-wire)

The DO can be software configured as scaled pulse output, latched, toggled, momentary, or timed duration output. The solid state, normally open switch is rated at 500mA and is often used to drive an odorizer.

Expansion I/O

The FB2100 can also be supplied with the following expanded I/O:

- Integral pressure sensor
- Two analog channels – individually software selectable as analog inputs (AI) or analog outputs (AO)
- Two discrete channels – individually software selectable as either discrete inputs (DI), discrete outputs (AO) or pulsed inputs (PI)
- One PRT/RTD (2-, 3-, or 4-wire)

- Two optional relays allow for additional loads up to 30Vdc at 6A. 24 Vdc power is required to energize the relays.

Analog Inputs (AI) are individually software configurable for either 4 to 20mA or 1 to 5 Vdc operation.

To keep measurement uncertainty at a minimum when external transmitters are being used, both the AI and AO channels have industry-leading measurement accuracy with an excellent performance over a wide ambient temperature range.

Each Discrete Input (DI) channel can also be software configured to function as a latched DI.

The Discrete Output (DO) channels are solid-state, normally open switches rated at 500 mA, enough to directly drive most samplers. Each channel can be software configured as a latched, toggled, momentary, timed duration output (TDO), or scaled pulse output.

The PI channels are most commonly used to interface with turbine meters, Coriolis meters, ultrasonic meters, and Positive Displacement (PD) meters. The high-speed input supports signal up to 10.5 KHz.

Communications

The FB2100 has three user selectable serial communications ports with support for RS-232, RS-422, and/or RS-485 operation and one optional port that provides Mobile SCADA via Wi-Fi (802.11 b/g) communications using DNP3 protocol:

- COM1 – 4-wire serial communications. Software selectable for RS-232, RS-422, or RS-485 operation.
- COM2 – 2-wire serial communications. Software selectable for RS-232 or RS-485 operation.
- COM3 – 2-wire serial communications. Software selectable for RS-232 or RS-485 operation.
- COM4 – Mobile SCADA with Wi-Fi (802.11 b/g) communications (optional)

The FB2100 supports DNP3, Modbus slave (ASCII and RTU), BSAP and ROC protocols on all serial ports.

Mounting Options

The FB2100 supports either direct mount to a manifold on the pipeline, simple wall mounting or mounted on a two-inch pipe with the stainless steel pipe mounting kit.

FB2100 Flow Computer

CPU Module			
Processor	The central processing unit (CPU) of the flow computer is an NXP® Kinetis® K61 series CPU with an ARM® Cortex® M4 processor.		
Memory	SRAM	8 MB, holds current states of all variables and historical archives.	
	Flash	128 MB, holds firmware image and configuration files.	
Clock	Type	Real-time clock	
	Accuracy	0 °C to 40 °C	60 seconds/year
		-40 °C to 80 °C	110 seconds/year
Watchdog Timer	1175 milliseconds		
Diagnostics	Battery voltage monitor, external voltage monitor, SRAM battery status		
Communications			
Ports	COM1	4-wire serial communications. Software selectable for RS-232, RS-422, or RS-485 operation.	
	COM2	2-wire serial communications. Software selectable for RS-232 or RS-485 operation.	
	COM3	2-wire serial communications. Software selectable for RS-232 or RS-485 operation. Can communicate to 4088B transmitters	
	COM4	Mobile SCADA via Wi-Fi (optional) (802.11 b/g)	
Protocols	Serial ports support DNP3, Modbus slave (ASCII or RTU), BSAP, and ROC. Wi-Fi supports DNP3 DNP3 includes level 3 protocol subset		
Base I/O			
The base FB2100 includes the following I/O:			
<ul style="list-style-type: none"> ▪ 1 multivariable or static pressure sensor ▪ 1 process temperature input (PRT/RTD) ▪ 1 discrete output (DO) 			
Expansion I/O (optional)			
When the FB2100 is supplied with the expanded I/O option, the following options are available:			
<ul style="list-style-type: none"> ▪ 2 channels that are individually software selectable as either analog inputs or analog outputs ▪ 2 channels that are individually software selectable as either discrete inputs, discrete outputs, or pulse inputs ▪ 1 process temperature input (RTD/PRT) 			
Temperature Input (RTD/PRT)	Type	2-wire, 3-wire, or 4-wire (software selectable)	
	Measuring Range	-200 to +850 °C (-328 to 1562 °F)	
	Reference Accuracy	+/- 0.07 °C from -30 to 60 °C (±0.126 °F from -22 to +140 °F) +/- 0.1 °C from -60 to 200 °C (±0.18 °F from -76 to 392 °F)	

Ambient Temperature Effect	-30 to 60°C	+/- 0.017 °C per 10 °C (+/- 0.03 °F per 18 °F) from the calibration temperature
	-60 to 200°C	+/- 0.034 °C per 10 °C (+/- 0.06 °F per 18 °F) from the calibration temperature
Calculation Type	User selectable between:	Callendar–Van Dusen
		IEC 751/DIN 43760 (α 0.00385/°C)
		IEC (α 0.003920/°C)
Resolution	24 bits	
Scan Rate	1 second	
Voltage Input Impedance	Greater than 3 MΩ DC	
Excitation Current	205 μA	
Surge Suppression	36 Vdc	
Common Mode Rejection	100 dB at DC	
Normal Mode Rejection	100 dB at 50/60 Hz	

Relays (Optional) Provides two relays inside the flow computer enclosure.

I/O Specifications

Analog Inputs	Type	Single-ended	
	Input Range	1 to 5 Vdc or 4 to 20 mA (software selectable)	
	Over Range	1 to 5 Vdc	0.8 to 5.2 Vdc
		4 to 20 mA	3.2 to 20.8 mA
Resolution	16 bits		
Scan Rate	10 samples per second		
Input Impedance	1 to 5 Vdc Inputs	200 kΩ	
	4 to 20 mA Inputs	250 Ω	
Fault Mode	User-entered default value or last good value		
Software Filter	Software damping is available in FBxConnect configuration software		
Input Filter	20 HZ @ -3 dB		
Surge Suppression	30 Vdc		
Reference Accuracy	+/- 0.05% of span Note: To achieve the stated accuracy when analog inputs are used in voltage mode, you must wire analog input reference(s) to the AGND terminals <i>separately</i> from the discrete and communication ground references.		
Ambient Temperature Effect	+/- 0.05% of span per 10°C (18°F) from the calibration temperature		

	Long Term Stability	3 years
	SNR	87 dB
	Loop Power	External
Analog Outputs	Type	Single-ended, externally sourced
	Output Range	4 to 20 mA
	Resolution	14 bits
	Surge Suppression	30 Vdc
	Reference Accuracy	+/- 0.1% of span Note: To achieve the stated accuracy when analog outputs are used in voltage mode, you must wire analog output reference(s) to the AGND terminals <i>separately</i> from the discrete and communication ground references.
	Ambient Temperature Effect	+/- 0.05% of span per 10°C (18°F) from the calibration temperature
	Long Term Stability	3 years
	Fault Mode	User-entered default value or last good value
	Scan Rate	1 second
	Surge Suppression	30 Vdc
	Impedance	Current Mode Configured to drive a load impedance of 0 to 900 Ω Voltage Mode 100 kΩ
	Load Loop Resistance	0 to 900 Ω
	Max External Supply	30 Vdc
	Loop Power	External
Discrete Inputs	Type	Dry contact or an open collector
	Scan Rate	1 second
	Input Filter	10 Hz
	Input Current	Software selectable 66µA or 2mA
	Voltage Rating	30 Vdc maximum
	Frequency	10 Hz maximum
	Input Type	Latched or unlatched
	Loop Power	Internally sourced
	Surge Suppression	30 Vdc
	Fault Mode	User-entered default value or last good value
Discrete Outputs	Type	Open drain
	Current	500 mA maximum

Operating Voltage Range	30 Vdc maximum
Frequency	50 Hz maximum
Output Type	Latched, momentary, toggle, TDO, or scaled pulse
Surge Suppression	30 Vdc
Fault Mode	User-entered default value or last good value

Notes:

Discrete outputs are rated to 500mA maximum. In a small number of applications, however, the load on the DO could have an effect on the uncertainty of the analog inputs and outputs. The typical increase in uncertainty is around 0.05% and **only** occurs when **all** of the following are true:

- **Either** of the two *analog* channels is used as an AI (in voltage mode) or as an AO **and**
- **Either** of the two *discrete* channels is used as a DO **and**
- The total current load on these two DOs is **greater** than 300mA

Analog inputs in current mode are **not** affected.

Pulse Inputs	Type	Dry contact or open collector		
	Frequency	Low Range	0 to 300 Hz	
		High Range	0 to 10.5 kHz	
	Input Filter	Low Frequency	1 ms software selectable filter	
		High Frequency	30 μs software selectable filter	
	Input Current	Software selectable 66 μA or 2 mA		
	Voltage Rating	30 Vdc maximum		
	Loop Power	Internally sourced		
Surge Suppression	30 Vdc			

Relay Option

SPDT Relay	Internally mounted	Quantity	2
		(Relays each require a digital output from the flow computer)	
	Input	24 Vdc (24 Vdc is required to energize relays)	
	Contact Rating	0 to 30 Vdc Maximum Current 6A	

Integral Sensors

The FB2100 is available with the following integral sensor options:

- Multi-Variable Sensor – providing differential pressure and static pressure
- Static Pressure Sensor – providing static pressure only
- No integral sensor fitted – with interface to Rosemount™ 4088B MVT transmitters or analog transmitters

Multivariable Sensor (optional)

The standard Rosemount™ MultiVariable™ sensor has a stainless steel coplanar flange, a stainless steel (316L) diaphragm, and silicone fill fluid. Optional versions include:

- A Hastelloy® C-276 sensor diaphragm, a Hastelloy C-276 coplanar flange, with either NACE MRO175/ISO 15156 or MRO103 certification
- Stainless steel traditional flange, a stainless steel diaphragm, and silicon fill fluid.

Differential Pressure Input	DP Range 1	-25 to 25 Inches H ₂ O (-62.16 to 62.16 mbar)	
	Reference Accuracy	± 0.1% span; For spans less than 5:1, ± (0.025+0.015 [USL/Span]) % span	
	Stability	±0.2% USL for 1 year	
	Ambient Temperature Effect per 50°F (28°C)	from 1:1 to 30:1	± (0.2% USL + 0.25% span)
		from 30:1 to 50:1	± (0.24% USL + 0.15% span)
	Static Pressure Effects	Zero Error	± 0.25% USL per 1000 psi (69 bar)
		Span Error	± 0.4% USL per 1000 psi (69 bar)
	Over Pressure Limit	SP Range 3	2000 psi (137.89 bar)
	Burst Pressure Limit	10,000 psi (689.47 bar)	

Notes:

- 25-inch sensor is only available with static pressure SP Range 3, maximum pressure limited to 2000 psi.
- 25-inch sensor is only available with stainless steel sensor & coplanar flange.

	DP Range 2: Standard	0 to 250 Inches H ₂ O (623 mbar)	
	Reference Accuracy	± 0.1% span; For spans less than 10:1, ± (0.01 [USL/Span]) % span	
	Stability	±0.1% USL for 1 year	
	Ambient Temperature Effect per 50°F (28°C)	from 1:1 to 30:1	± (0.15% USL)
		from 30:1 to 50:1	± (0.20% USL)
	Static Pressure Effects	Zero Error	± 0.1% USL per 1000 psi (69 bar) For Static Pressures above 2000 psi: ± [0.2 + 0.0001 * (Ps - 2000)] % per 1000 psi
		Span Error	± 0.2% USL per 1000 psi (69 bar)
	Over Pressure Limit	SP Range 1	1600 psi (110.32 bar)
		SP Range 2	3626 psi (250.00 bar)
		SP Range 3	3626 psi (250.00 bar)
	Burst Pressure Limit	10,000 psi (689.47 bar)	

Note: 0.1% Accuracy is not available on traditional flange.

DP Range 2: Enhanced	0 to 250 Inches H ₂ O (623 mbar)			
	Reference Accuracy	± 0.075% span; For spans less than 10:1, ± (0.025 + 0.005 [USL/Span]) % span		
	Stability	±0.125% USL for 5 years; For ±50 °F (28 °C) temperature changes, up to 1000 psi (68.9 bar) line pressure		
	Ambient Temperature Effect per 50°F (28°C)	± (0.0175% USL + 0.1% span) from 1:1 to 5:1, ± (0.035% USL + 0.125% span) from 5:1 to 100:1		
	Static Pressure Effects	Zero Error	± 0.05% USL per 1000 psi (69 bar) For Static Pressures above 2000 psi: ± [0.1 + 0.0001 * (Ps - 2000)] % per 1000 psi	
		Span Error	± 0.2% USL per 1000 psi (69 bar)	
	Over Pressure Limit	SP Range 1	1600 psi (110.32 bar)	
		SP Range 2	3626 psi (250.00 bar)	
		SP Range 3	3626 psi (250.00 bar)	
	Burst Pressure Limit	10,000 psi (689.47 bar)		
DP Range 3: Standard	0 to 1000 Inches H ₂ O (2.5 bar)			
	Reference Accuracy	± 0.1% span; For spans less than 10:1, ± (0.01 [USL/Span]) % span		
	Stability	±0.1% USL for 1 year		
	Ambient Temperature Effect per 50°F (28°C)	from 1:1 to 30:1	± (0.15% USL)	
		from 30:1 to 50:1	± (0.20% USL)	
	Static Pressure Effects	Zero Error	± 0.1% USL per 1000 psi (69 bar) For Static Pressures above 2000 psi: ± [0.2 + 0.0001 * (Ps - 2000)] % per 1000 psi	
		Span Error	± 0.2% USL per 1000 psi (69 bar)	
	Over Pressure Limit	SP Range 2	3626 psi (250.00 bar)	
		SP Range 3	3626 psi (250.00 bar)	
	Burst Pressure Limit	10,000 psi (689.47 bar)		
Notes:				
<ul style="list-style-type: none"> ▪ 0.1% Accuracy is not available on traditional flange. ▪ 1000" DP range with 0.1% accuracy only available with stainless steel sensor and coplanar flange. ▪ 1000" DP range is not available with 300 psi static pressure (SP Range 1). 				

DP Range 3: Enhanced	0 to 1000 Inches H ₂ O (2.5 bar)		
	Reference Accuracy	± 0.075% span; For spans less than 10:1, ± (0.025 + 0.005 [USL/Span]) % span	
	Stability	±0.125% USL for 5 years; For ±50 °F (28 °C) temperature changes, up to 1000 psi (68.9 bar) line pressure	
	Ambient Temperature Effect per 50°F (28°C)	± (0.0175% USL + 0.1% span) from 1:1 to 5:1, ± (0.035% USL + 0.125% span) from 5:1 to 100:1	
	Static Pressure Effects	Zero Error	± 0.05% USL per 1000 psi (69 bar) For Static Pressures above 2000 psi: ± [0.1 + 0.0001 * (Ps - 2000)] % per 1000 psi
		Span Error	± 0.2% USL per 1000 psi (69 bar)
	Over Pressure Limit	SP Range 2	3626 psi (250.00 bar)
SP Range 3		3626 psi (250.00 bar)	
Burst Pressure Limit	10,000 psi (689.47 bar)		
Note: 1000" DP range is not available with 300 psi static pressure (SP Range 1).			

Static Pressure Input

The following details are for the static pressure measurement of the MultiVariable sensor

SP Range 1	Gauge	-14.2 to 300 psi _g (-0.98 to 20.68 bar)	
	Absolute	0.5 to 300 psi _a (0.03 to 20.68 bar)	
	Reference Accuracy	Standard	± 0.1% span; For spans less than 5:1, ± [0.017 (USL/Span)] % span
Enhanced		± 0.075% span; For spans less than 5:1, ± [0.013(USL/Span)] % span	
SP Range 2	Gauge	-14.2 to 1500 psi _g (-0.98 to 103.42 bar)	
	Absolute	0.5 to 1500 psi _a (0.03 to 103.42 bar)	
	Reference Accuracy	Standard	± 0.1% span; For spans less than 5:1, ± [0.017 (USL/Span)] % span
Enhanced		± 0.075% span; For spans less than 5:1, ± [0.013(USL/Span)] % span	
SP Range 3	Gauge	-14.2 to 3626 psi _g (-0.98 to 250.00 bar) Note: When used with 25" H ₂ O DP Sensor, maximum static pressure is 2000 psi.	
	Absolute	0.5 to 3626 psi _a (0,03 to 250,00 bar) Note: When used with 25" H ₂ O DP Sensor, maximum static pressure is 2000 psi.	

	Reference Accuracy	Standard	± 0.1% span; For spans less than 5:1, ± [0.017 (USL/Span)] % span
		Enhanced	± 0.075% span; For spans less than 5:1, ± [0.013(USL/Span)] % span
Stability	Standard Accuracy	±0.1% USL for 1 year	
	Enhanced Accuracy	±0.125% USL for 5 years	
Ambient Temperature Effects per 28 °C (50 °F)	Standard Accuracy	± (0.175% USL) from 1:1 to 10:1, ± (0.225% USL) from 10:1 to 25:1	
	Enhanced Accuracy	± (0.050% USL + 0.125% span) from 1:1 to 10:1, ± (0.060% USL + 0.175% span) from 10:1 to 25:1	

Static Pressure Sensor (optional)

The following section applies to the “In-Line” Integral Static Pressure sensor, without differential pressure, which would typically be used with linear meters that provide a pulsed signal for flow.

These static pressure sensors are provided in stainless steel with a 1/2” – 14 NPT Female process connections.

Static Pressure Input	SP Range 1	Gauge	-14.7 to 150 psi _g (-1.01 to 10.34 bar)
		Absolute	0 to 150 psi _a (0 to 10.34 bar)
	SP Range 2	Gauge	-14.7 to 800 psi _g (-1.01 to 55.15 bar)
		Absolute	0 to 800 psi _a (0 to 55.15 bar)
	SP Range 3	Gauge	-14.7 to 4000 psi _g (-1.01 to 275.79 bar)
		Absolute	0 to 4000 psi _a (0 to 275.79 bar)
Reference Accuracy	Standard	± 0.1% span For spans less than 10:1, ± (0.01 [USL/Span]) % span	
		Enhanced	± 0.075% span For spans less than 10:1, ± (0.025 + 0.005 [USL / Span]) % span
Stability	Standard	±0.1% USL for 1 year	
	Enhanced	±0.125% USL for 5 years	
Ambient Temperature Effects per 28 °C (50 °F)	Standard	± (0.175% USL) from 1:1 to 30:1 ± (0.225% USL) for 30:1 to 50:1	
	Enhanced	± (0.050% USL + 0.125% span) from 1:1 to 30:1 ± (0.060% USL + 0.175% span) for 30:1 to 100:1	

Over Pressure Limit	SP Range 1	1500 psi (103.42 bar)
	SP Range 2	1600 psi (110.32 bar)
	SP Range 3	6000 psi (413.69 bar)
Burst-Pressure Limit	11000 psi (758.42 bar)	

Power	
External DC Power Supply	10.5 Vdc to 30 Vdc external supply (Max power at 10 watts)
Optional Rechargeable Lead Acid Battery	Internal mounted 10.5 Ah 12 Vdc battery The battery can power the unit for up to 45 days without any solar charging depending on the application, ambient temperature, and solar regulator type and can be charged by a suitable solar panel and solar charge regulator/controller panel. Note: This option is available only with Class 1 Div 2 approval
Solar Panel and Regulator Options	Optional 30W 12 Vdc solar panel with built-in SunKeeper™ SK-6 regulator With the SunKeeper SK-6 solar regulator the battery can power the unit without charging up to 32 days the depending on the application. Optional internally mounted SunSaver SS-6-12 Vdc regulator With the SunSaver S-6-12 solar regulator the battery can power the unit without charging up to 45 days depending on the application. Note: These options are available only with Class 1 Div 2 approval
SRAM Battery	Lithium coin cell type BR2335 Life expectancy of 5–7 years with power; 10,000 hours without power

Power Modes

To keep power consumption to a minimum, especially for remote sites, the FB2100 can run in two different power modes, low and standard. The FB2100 normally runs in low power mode for standard metering applications.

When running in low power mode, the radio power control function is used to switch to standard power mode and enable the serial ports. During communication periods, the unit uses the standard power mode and then automatically reverts to low power mode when the communication period is over.

Note: Serial connection to a remote 4088B MVT can run in low power mode.

The local display and Mobile SCADA with Wi-Fi can be configured to switch off after a period of inactivity (configurable between 1 and 60 minutes) or be permanently left on.

When running in low power mode, if you need to use more than the default number of data points for logging, consult the *Emerson FB2100 Flow Computer Instruction Manual* (D301783X012) to determine the possible impact on power consumption.

The figures below are typical power values in mW measured at room temperature.

Low Power Mode	Base unit with integral multivariable DP and pressure sensor and temperature measurement, single DO available	55 mW @ 12Vdc
	Base unit with expanded I/O, integral multivariable DP, and pressure sensor and temperature measurement, 2 discrete and 2 analog channels available	67 mW @ 12Vdc
Additional Load Options	Display and Backlight active	340 mW @ 12Vdc
	Mobile SCADA	379 mW @ 12Vdc
	Mobile SCADA and Display active	398 mW @ 12Vdc
	DO active (1 Hz, 50:50 duty cycle, no load)	12 mW @ 12Vdc

		PI active (10KHz, 50:50 duty square wave)	12 mW @ 12Vdc
Standard Power Mode	Base unit with integral multivariable DP and pressure sensor and temperature measurement, single meter run	240 mW @ 12Vdc	290 mW @ 24Vdc
	Base unit with temperature measurement, (no integral sensor) communicating to remote 4088 (externally powered), single meter run	220 mW @ 12Vdc	268 mW @ 24Vdc
	Base unit with integral multivariable DP and pressure sensor and temperature measurement, 2 discrete and 2 analog channels available, single meter run	260 mW @ 12Vdc	313 mW @ 24Vdc
	Base unit with temperature measurement, integral static pressure sensor, and pulsed input, single meter run	276 mW @ 12Vdc	330 mW @ 24Vdc
	Additional Load Options	Display and Backlight active	159 mW @ 12Vdc
	Mobile SCADA	191 mW @ 12Vdc	202 mW @ 24Vdc
	Mobile SCADA and Display active	233 mW @ 12Vdc	245 mW @ 24Vdc
	DO active (1 Hz, 50:50 duty cycle, no load)	20 mW @ 12Vdc	23 mW @ 24Vdc
	PI active (10KHz, 50:50 duty square wave)	14 mW @ 12Vdc	15 mW @ 24Vdc

Physical

Aluminum Enclosure	Construction	Powder coat aluminum, with lockable door
	Ingress Protection	IEC 60529 IP66 & NEMA 4X
	Dimensions	356 mm H by 305 mm W by 152 mm D (14 in. H by 12 in. W by 6 in. D)
	Mounting	2 In. pipe, direct manifold or panel mount
	Wiring	Size 12 to 28 American Wire Gauge (AWG) (0.3 to 2mm diameter)
	Wiring Access	2 conduit entry points, 3/4 in. NPT, 1 blanked 5/8" (16mm) hole
	Weight	FB2100 with MVS coplanar flange sensor: 10.75 Kg (23.7 lb) FB2100 with static pressure sensor: 9.98 Kg (22 lb) FB2100 without sensor: 8.21 Kg (18.1 lb) Internal battery: 3.28 Kg (7.23 lb)
Fiberglass Enclosure	Construction	Compression-molded fiberglass, with lockable door
	Ingress Protection	IEC 60529 IP66 & NEMA 4X
	Dimensions	356mm by 305mm by 152mm (12 in. by 10 in. by 6 in.)
	Mounting	2-inch pipe, direct manifold, or panel mount
	Wiring	Size 12 to 28 American Wire Gauge (AWG) (0.3 to 2mm diameter)
	Wiring Access	2 conduit entry points, 3/4 in. NPT, 1 blanked 5/8" (16mm) hole

	Weight	FB2100 with MVS coplanar flange sensor: 6.94 Kg (15.3 lb)
		FB2100 with static pressure sensor: 6.17 Kg (13.6 lb)
		FB2100 without sensor: 4.4 Kg (9.7 lb)
		Internal battery: 3.28 Kg (7.23 lb)
HMI	20 characters per line; 4 lines in display.	
Security Switch (Optional)	Provides an alarm each time the enclosure door is opened.	
Local Display (Optional)	Type	Backlight LCD display
Environmental		
Operating Temperature	-40 °C to +80 °C (-40 °F to +176 °F) (see ambient temps in Approvals section) Note: Please check Approvals section for any restrictions. The display exhibits increased response time and decreased contrast at temperatures below -30 °C (-22 °F).	
Storage Temperature	-40 to 85 °C (-40 to 185 °F)	
Operating Humidity	5 to 95%, non-condensing	
Conformal Coating	All boards are conformal coated and comply with ANS21/ISA S71.04 Class G3 environments	
Electro Magnetic Compatibility	The following EMC Emissions and Immunity are evaluated per EMC directive 2014/30/EU. Harmonized standards used: EN 61326-2-3-2013 Immunity EN 61326-1-2013 Emissions	
Immunity	EN 61000-4-2 (Electro Static Discharge) EN 61000-4-3 (Radiated Immunity) * EN 61000-4-4 (Fast Transients) EN 61000-4-5 (Surges) EN 61000-4-6 (Conducted RF) EN 61000-4-8 (Power Frequency Magnetic Field) EN 61000-4-17 (Voltage Ripple) EN 61000-4-29 (Voltage Dips and Interruptions) *Meets CE compliance 10V/m industrial requirements (deviations < 1% span for RTD and Pressure readings in addition to original specification)	
Radiated Emissions	EN 55022 Class A	
Vibration	2g over 10 to 150 Hz 1g over 150 to 200 Hz	
Approvals		
Product Markings for Hazardous Locations	UL	Class I, Div 2 Groups A, B, C, D Hazardous Locations, Temperature Code T4

Ambient Temperature Aluminum enclosure
 -40 °C to +80 °C (-40 °F to +176 °F) (no battery)
 -40 °C to +45 °C (-40 °F to +113 °F) (with rechargeable lead acid battery) **Note 1**
 -40 °C to +60 °C (-40 °F to +140 °F) (with optional relays)

Fiberglass housing
 -35 °C to +80 °C (-31 °F to +176 °F) (no battery)
 -35 °C to +45 °C (-31 °F to +113 °F) (with rechargeable lead acid battery) **Note 1**
 -35 °C to +60 °C (-31 °F to +140 °F) (with optional relays)

Note: Maximum ambient temperature for models with the internal SunSaver SS-6-12 Vdc solar regulator is 60 °C (140 °F). However, the internal lead acid battery is limited to +45 °C (+113 °F).

Evaluated per Approval Standards ANSI/ISA 12.12.01-2015
 CSA C22.2 No. 213-15, 1st Ed
 CSA C22.2 NO. 61010-1-12 3rd Ed.
 UL61010-1 3rd Ed.

UL ATEX Cert: DEMKO 16 ATEX 1579X
 IECEx Cert: IECEx UL IECEx UL 16.0069X
 Ex nA IIC T4 Gc

Ambient Temperature -25 to +55 °C (-13 to +131 °F)



Evaluated per Approval Standards Directive 2014/34/EU
 EN 60079-0:2012+A11:2013
 EN 60079-15:2010

Note: ATEX and IECEx approval requires the use of an external DC power supply.

Miscellaneous Approvals

Customs Union



TR CU 004/2011, TR CU 020/2011
 Conforms to the requirements of the technical regulations of the Customs Union

RoHS2

Device without integral MVS or SP Sensor:

RoHS (2) EU Directive 2011/65/EU

Device with integral MVS or SP Sensor:

RoHS (2) EU Directive 2011/65/EU: This product may be considered out-of-scope when used for the intended design purpose in a Large Scale Fixed Installation (LSFI). Consult <https://www.emerson.com/compliance> for up-to-date product information.

RoHS



[This page is intentionally left blank]

For customer service and technical support, visit www.Emerson.com/SupportNet.

**Global Headquarters,
North America, and Latin America:**

Emerson Automation Solutions
Remote Automation Solutions
6005 Rogerdale Road
Houston, TX 77072 U.S.A.
T +1 281 879 2699 | F +1 281 988 4445
www.Emerson.com/RemoteAutomation

Europe:

Emerson Automation Solutions
Remote Automation Solutions
Unit 8, Waterfront Business Park
Dudley Road, Brierley Hill
Dudley UK DY5 1LX
T +44 1384 487200 | F +44 1384 487258

Middle East/Africa:

Emerson Automation Solutions
Remote Automation Solutions
Emerson FZE
P.O. Box 17033
Jebel Ali Free Zone – South 2
Dubai U.A.E.
T +971 4 8118100 | F +971 4 8865465

Asia-Pacific:

Emerson Automation Solutions
Remote Automation Solutions
1 Pandan Crescent
Singapore 128461
T +65 6777 8211 | F +65 6777 0947

© 2018 Remote Automation Solutions, a business unit of Emerson Automation Solutions. All rights reserved.

This publication is for informational purposes only. While every effort has been made to ensure accuracy, this publication shall not be read to include any warranty or guarantee, express or implied, including as regards the products or services described or their use or applicability. Remote Automation Solutions (RAS) reserves the right to modify or improve the designs or specifications of its products at any time without notice. All sales are governed by RAS terms and conditions which are available upon request. RAS accepts no responsibility for proper selection, use or maintenance of any product, which remains solely with the purchaser and/or end-user.