

AE Bolted Molded Case Switches and Enclosures

Explosionproof, Dust-Ignitionproof, Watertight

NEC/CEC:

Class I, Division 1 and 2, Groups B, C, D

Class II, Division 1 and 2, Groups E, F, G

Class III

NEMA 4, 4X

Application

- Explosionproof molded case switch enclosures are used where hazardous materials are handled or stored.
- These units are used to disconnect circuits, control of lighting and power circuits.

Features

- Precision machined flamepath between box and cover.
- Bolt on stainless steel slotted mounting feet.
- Stainless steel, captive Quad-Lead[®] cover bolts are standard (disengaged in 1-1/2 turns).
- Ground lug package and installation instructions for termination of ground wire enclosed.
- External operating handle with stops for limiting handle travel.
- Switch operators can be locked in the ON or OFF position (up to 3 padlocks).
- External flange maximizes internal space.
- Standard outlets top and bottom for line and load wiring.
- Plugged 1/2" outlets top and bottom for breather and drain.
- Switches mounted on a galvanized steel removable pan.
- Molded case switches are designed to accept +40 °C (+104 °F) standard circuit breakers.
- O-ring gasket insures watertight integrity.

Standard Materials

- Bodies and covers: copperfree (4/10 of 1% max.) aluminum
- Cover bolts, hinges switch and operator shafts: stainless steel
- O-ring: neoprene

Standard Finishes

- Bodies and covers: gray epoxy powder coat inside and outside standard

Options

Must be listed in alphanumeric sequence at the end of the catalog number.

- Auxiliary switch (1NO or 1 NC), add suffix —**AS1**.
- Auxiliary switch (2NO or 2NC), add suffix —**AS2**.
- Breather, NEMA 4X (includes outlet and installation), add suffix —**BR**.
- Drain, NEMA 4X (includes outlet and installation), add suffix —**DN**.
- External grounding stud, add suffix —**EGS**.
- Plastic nameplate, 50.8 mm x 101.6 mm (2" x 4"), 3.2 mm (0.125") black letters on white surface, 3 lines max, specify legend, add suffix —**NP**.
- Shunt trip (specify voltage), add suffix —**ST**.
- Under voltage release (specify voltage), add suffix —**UV**.
- For 1200 Amp or 4-pole versions, contact your local representative.

NEC Certifications and Compliances

- UL Standard: UL 1203
- UL Classified: E84577

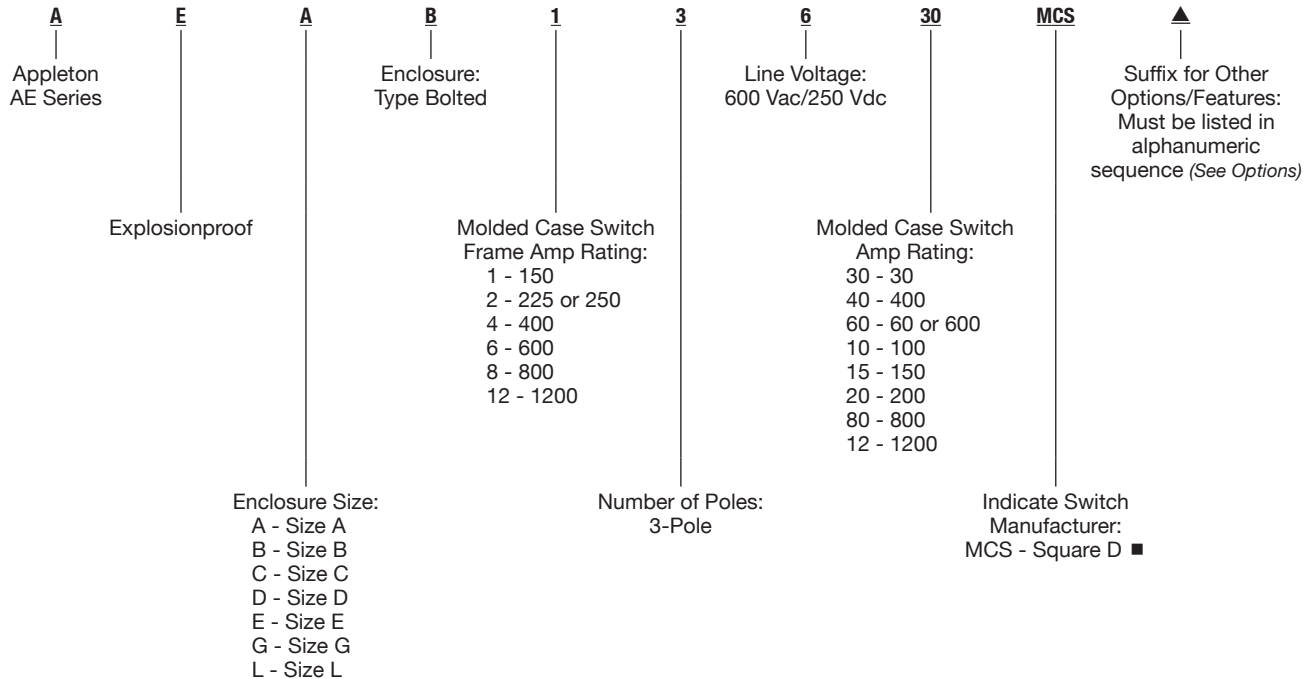


AE Bolted Molded Case Switches and Enclosures

Explosionproof, Dust-Ignitionproof, Watertight

NEC:
 Class I, Division 1 and 2, Groups B, C, D
 Class II, Division 1 and 2, Groups E, F, G
 Class III
 NEMA 4, 4X

Catalog Numbering Guide



| Molded Case Switch Frame Size | Molded Case Switch Type/Interrupting Capacity ① | Volts | Amp Rating | 3 Pole Catalog Number | Standard Conduit Outlets (Inches) |
|-------------------------------|---|-------------------------|------------|-----------------------|-----------------------------------|
| 150 | FHL 18,000 AIC @ 600 Vac (For higher interrupting capacities, contact your local representative) | 600 Vac, 120/250 Vdc | 30 | AEAB13630MCS | 1-1/2 |
| | | | 60 | AEAB13660MCS | 1-1/2 |
| | | | 100 | AEBB13610MCS | 2 |
| | | | 150 | AEEB13615MCS | 2-1/2 |
| 225 | FHL 18,000 AIC @ 600 Vac (For higher interrupting capacities, contact your local representative) | 600 Vac, 120/250 Vdc | 225 | AEEB23622MCS | 3 |
| 250 | KAL 22,000 AIC @ 600 Vac (For higher interrupting capacities, contact your local representative) | 600 Vac, 120/250 Vdc | 250 | AEEB23625MCS | 3 |
| 400 | LAL 22,000 AIC @ 600 Vac (For higher interrupting capacities, contact your local representative) | 600 Vac, 120/250 Vdc | 400 | AEFB43640MCS | 3 |
| 600 | LCL 35,000 AIC @ 600 Vac | 600 Vac, 120/250 Vdc | 600 | AEDB63660MCS | 4 |
| 800 | MHL 25,000 AIC @ 600 Vac (For higher interrupting capacities, contact your local representative) | 600 Vac, 120/250 Vdc | 800 | AELB83680MCS | (2) 4 |
| 1200 ① | ND 25,000 AIC @ 600 Vac | 600 Vac, 120/250 Vdc | 800 | AEGB123680MCS | (3) 4 |
| | | | 1200 | AEGB123612MCS | (3) 4 |

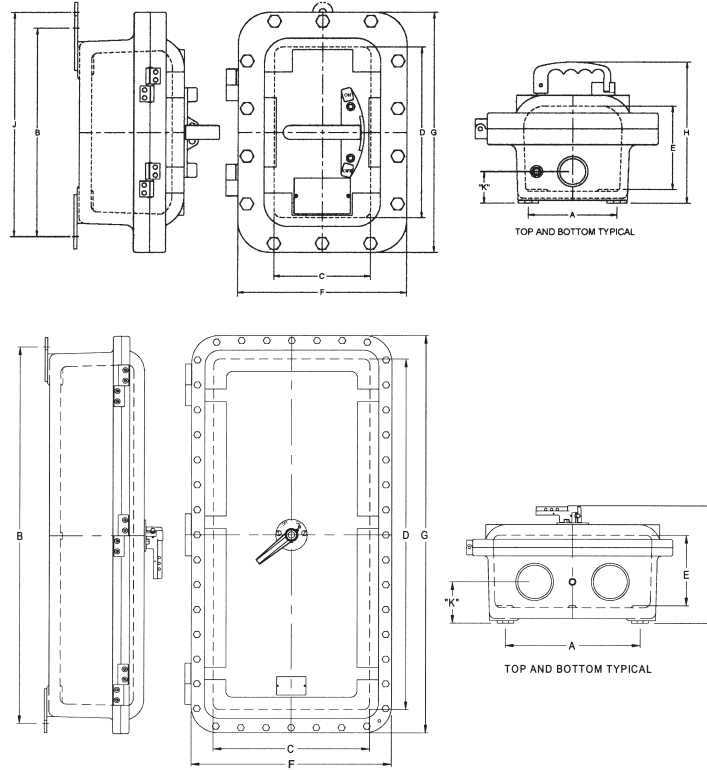
▲ To complete the catalog number please add the appropriate suffix for other options/features. These suffixes can be found listed under Options.
 ■ Square D is a registered trademark of Schneider Electric.
 ① For 1200 Amp, contact your local representative.

AE Bolted Molded Case Switches and Enclosures

Explosionproof, Dust-Ignitionproof, Watertight

NEC:
 Class I, Division 1 and 2, Groups B, C, D
 Class II, Division 1 and 2, Groups E, F, G
 Class III
 NEMA 4, 4X

Dimensions in Millimeters (Inches)



Enclosure Only

| Enclosure Size | Catalog Number | Dia. Number | Dimensions in Millimeters (Inches) | | | | | | | | | | Number of Outlets | K Dimension | Approximate Weight kgs (lbs) |
|----------------|----------------|-------------|------------------------------------|-------------------|------------------|------------------|-------------------|------------------|------------------|-------------------|------------------|---|-------------------|-----------------|------------------------------|
| | | | Mounting | | | Inside | | | Outside | | | | | | |
| | | | A | B | J | C | D | E | F | G | H | | | | |
| A | AEAB | 1 | 139.7 (5.50) | 333.5 (13.13) | 358.9 (14.13) | 155.7 (6.13) | 273.0 (10.75) | 133.3 (5.25) | 270.0 (10.63) | 387.3 (15.25) | 224.5 (8.84) | 2 | 50.8 (2.00) | 17.24 (38) | |
| B | AEBB | 1 | 152.4 (6.00) | 457.2 (18.00) | 782.6 (19.00) | 165.1 (6.50) | 406.4 (16.00) | 139.7 (5.50) | 279.4 (11.00) | 520.7 (20.50) | 227.8 (8.97) | 2 | 58.6 (2.31) | 25.85 (57) | |
| C | AECB | 1 | 260.3 (10.25) | 574.8 (22.63) | Not Available | 289.0 (11.38) | 508.0 (20.00) | 162.0 (6.38) | 162.0 (6.38) | 638.3 (25.13) | 243.5 (9.59) | 2 | 88.9 (3.50) | 47.17 (104) | |
| E | AEEB | 1 | 215.9 (8.50) | 689.1 (27.13) | Not Available | 285.7 (11.25) | 758.9 (29.88) | 183.8 (7.63) | 406.4 (16.00) | 749.3 (29.50) | 311.9 (12.28) | 2 | 101.6 (4.00) | 65.77 (145) | |
| F | AEFB-250 | 1 | 241.3 (9.50) | 692.1 (27.25) | Not Available | 285.7 (11.25) | 758.9 (29.88) | 204.7 (8.06) | 416.0 (16.38) | 889.0 (35.00) | 313.4 (12.34) | 2 | 106.4 (4.19) | 77.11 (170) | |
| F | AEFB-400 | 2 | 241.3 (9.50) | 692.1 (27.25) | Not Available | 285.7 (11.25) | 758.9 (29.88) | 204.7 (8.06) | 416.0 (16.38) | 889.0 (35.00) | 320.8 (12.63) | 4 | 106.4 (4.19) | 77.11 (170) | |
| D | AEDB | 2 | 409.7 (16.13) | 1035.0 (40.75) | Not Available | 346.2 (13.63) | 1079.5 (42.50) | 193.8 (7.63) | 457.2 (18.00) | 962.1 (37.88) | 325.3 (12.81) | 4 | 109.4 (4.31) | 103.42 (228) | |
| L | AELB | 3 | 406.4 (16.00) | 1152.6 (45.38) | Not Available | 473.2 (18.63) | 1073.1 (42.25) | 215.9 (8.50) | 606.5 (23.88) | 1216.1 (47.88) | 361.9 (14.25) | 4 | 127.0 (5.00) | 190.06 (419) | |
| G | AEGB | 4 | 543.1 (21.38) | 1270.0 (50.00) | Not Available | 508.0 (20.00) | 1524.0 (60.00) | 254.0 (10.00) | 635.0 (25.00) | 1651 (65.00) | 534.0 (21.38) | 6 | 111.2 (4.38) | 257.19 (567) | |