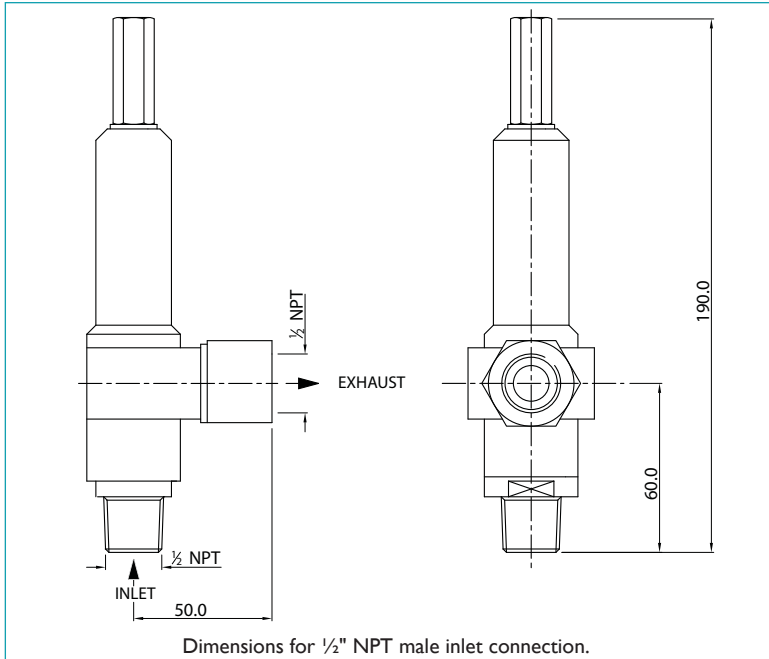


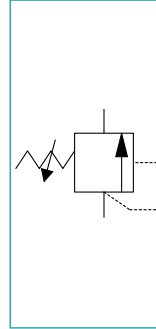
Hydraulic Service



Low Pressure Relief Valves for Accurate System Over Pressure Protection



SCHMATIC



Features and Benefits

- Suitable for chemical applications
- Valve Construction - the valve uses chemical resistant polymer materials in the seat to provide good low pressure seating with zero leakage.
- Sealing Re-Seat Pressure - Virtually zero leakage re-seat pressure \geq 90% of cracking pressure.
- Flow Capacity - Flow rates up to 112l / min. at 10% over pressure.
- Long Life and Repeatable Performance - are ensured through a large area seat.

Materials

Body	- 316L stainless steel	
Spring	- 316S42 and 302S26 stainless steel	
Seal Material	- Nitrile	- standard
	- Viton	- add suffix M089 eg. I4340 - 08 - M089
	- Silicone	- add suffix M065 eg. I4340 - 08 - M065
	- Low Temp Nitrile	- add suffix M106 eg. I4340 - 08 - M106
Seat Material	- Acetal	- standard
	- PEEK	- add suffix M100 eg. I4340 - 08 - M100

Approvals Details



These relief valves conform to European Directive 94/9/EC relating to equipment intended for use in potentially explosive atmospheres and are ATEX compliant. These valves also conform to the Pressure Equipment Directive 97/23/EC. All valves are CE marked and supplied with a test certificate plus a declaration of conformity.

Accuracy of information
We take care to ensure that product information in this catalogue is reasonably accurate and up-to-date. However, our products are continually developed and updated so to ensure accurate and up-to-date information please refer to the product catalogue issue list on our web site or contact a member of our sales team.

When selecting a product, the applicable operating system design must be considered to ensure safe use. The products function, material compatibility, adequate ratings, correct installation, operation and maintenance are the responsibilities of the system designer and user.

Quality Assurance
All Bifold products are manufactured to a most stringent QA programme to ensure that every product will give optimum performance and reliability. We are third party certified to BS EN ISO 9001:2008. Functional test certificate, letter of conformity and copies of original mill certificates, providing total traceability are available on request, to BS EN 10204 3.1 where available. We reserve the right to make changes to the specifications and design etc., without prior notice.

Hydraulic Service



Product Description

The Type I4340 low pressure relief valve has been designed to provide accurate pressure control in systems operating at pressures up to 100 bar, such as chemical injection applications.

Flow Capacity - Flow rates up to 112 l / min at 10% over pressure.

The low pressure relief valve weight is 0.89 Kg.

Selection Chart - Ordering Example

LOW PRESSURE RELIEF VALVE I4340 SPECIFICATIONS				
Part Number	Pressure Range (bar)	Inlet Connection	Outlet Connection	Repair Kit
I4340 - 08	5 - 50	1/4" NPT Female	1/4" NPT Female	RS I4340 - 08
I4340 - 12	5 - 100	1/4" NPT Female	1/4" NPT Female	RS I4340 - 12
I4340 - 13	5 - 50	1/4" BSP	1/4" BSP	RS I4340 - 13
I4340 - 14	5 - 100	1/4" BSP	1/4" BSP	RS I4340 - 14
I4340 - 11	5 - 50	3/8" NPT	3/8" NPT	RS I4340 - 11
I4340 - 15	5 - 100	3/8" NPT	3/8" NPT	RS I4340 - 15
I4340 - 03	5 - 50	1/2" NPT Male	1/2" NPT Female	RS I4340 - 03
I4340 - 04	5 - 100	1/2" NPT Male	1/2" NPT Female	RS I4340 - 04
I4340 - 06	5 - 50	1/2" BSP Male	1/2" BSP Female	RS I4340 - 06
I4340 - 02	5 - 50	3/4" NPT Female	1/2" NPT Female	RS I4340 - 02
I4340 - 07	5 - 50	3/4" NPT Female	3/4" NPT Female	RS I4340 - 07
I4340 - 16	5 - 50	3/4" BSP	3/4" BSP	RS I4340 - 16
I4340 - 17	5 - 100	3/4" BSP	3/4" BSP	RS I4340 - 17
I4340 - 09	5 - 50	1" BSP Female	1" BSP Female	RS I4340 - 09
I4340 - 05	5 - 50	1" NPT Male	1" NPT Female	RS I4340 - 05

It is the responsibility of the system designer and user to select products that are suitable for their intended application of use.