

# Field Tools



Field Tools is a Microsoft® Windows®-based configuration software suite designed to perform remote terminal unit (RTU), flow computer, and HART® device configuration and maintenance in the field. Field Tools provides technicians and engineers with a single software toolkit that performs all necessary configuration and diagnostics.

This enhanced tool kit can launch the following configuration tools for Emerson Flow Computers and RTUs:

- FBxConnect
- ROCLINK™ 800
- TechView

With the above, Field Tools provides support for:

- New FB1000 and FB2000 Series Flow Computers
- ROC RTUs
- FloBoss Flow Computers
- ControlWave® Flow Computers and RTUs

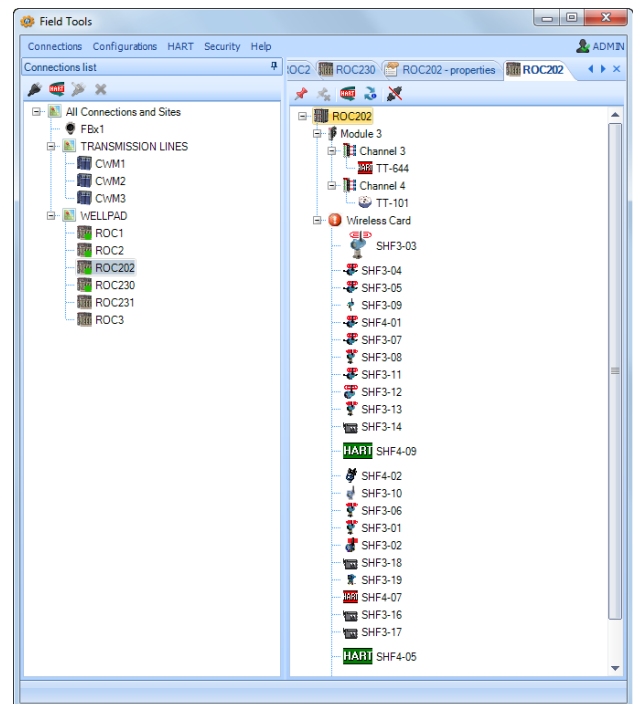
Additionally, Field Tools is a fully-functional HART communicator that supports configuration, troubleshooting, and maintenance of all wired HART and WirelessHART® field devices. The installation and set-up time can now be streamlined by leveraging a single tool suite across RTUs flow computers and field devices.

## Key Benefits

- **Ease of Use:** incorporates an intuitive graphical user interface
- **Cost Effective:** eliminates need for expensive handheld configurators, HART multiplexers, or gateways
- **Faster Configuration, Commissioning, and Startup Times:** performs device test and calibration quickly and efficiently without the need for any Modbus mapping
- **Reduced Maintenance Expenditures:** provides remote troubleshooting by monitoring status and diagnostic information
- **Increased User Safety:** eliminates the need to climb tanks or go to hazardous areas to establish a physical device connection

## Features

- Launches FBxConnect, ROCLINK 800, and TechView configuration tools
- One tool allows for simple site connection, calibration etc. – for all Emerson’s field flow computers and RTUs
- Performs complete HART device configuration and diagnostics using your PC
- Views and edits HART device status and variables
- Supports HART and WirelessHART protocols
- Supports Add Device functionality to load additional HART Device Descriptions (DDs)
- Connects via HART Modem (USB) or RTU / Flow Computer (serially or IP)

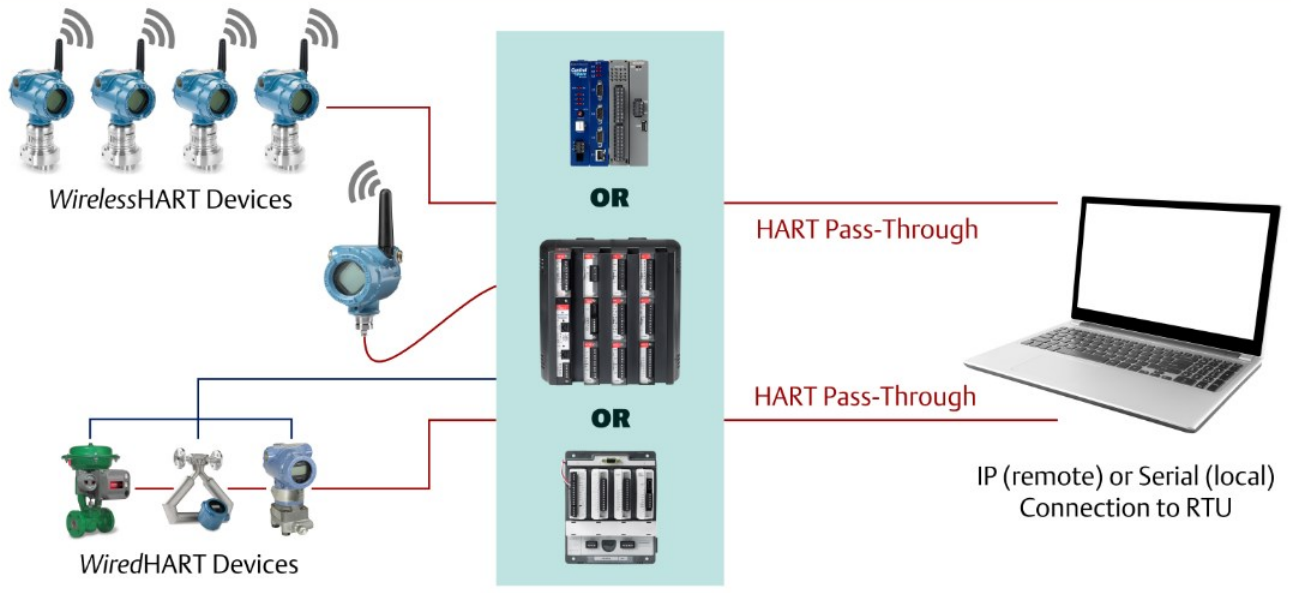


Field Tools

The software and user documentation is available as a free download from our [SupportNet](#) site.

**Note:** Activating a new SupportNet account may take up to 24 hours to process; plan your need for this software accordingly.

# Emerson RTU integrated with IEC 62591 (WirelessHART®) Interface



## Field Tools Specifications and Requirements

### Software Operating Environment

Operating System 32 or 64-bit, Microsoft® Windows® 7 SP1, Windows 8.1, and Windows 10  
**Note:** Operating system compatibility is unique for each configuration tool launched by Field Tools.

	Windows 7	Windows 8.1	Windows 10
FBxConnect	YES	YES	YES
ROCLINK	YES	NO	YES
TechView	YES	NO	YES
AMS Device Configurator	YES	NO	NO
AMS Wireless Snap-on	YES	NO	NO

### Hardware Operating Requirements

CPU	Intel® Core™ 2 Duo T7100 or similar specification Intel CPU (minimum)		
Hard Disk Space	2.5 GB		
RAM	4 GB		
Display	1366 x 768 or better resolution (OS Compatible)		
Network Ports	USB port	MACTek® Viator® USB HART Interface (option)	
	Either Ethernet or RS-232 port		

### Supported Devices per RTU using HART Communications

FloBoss™ 107	Up to 5 wired multidrop devices per HART channel, or up to 20 <i>WirelessHART</i> ® devices per RTU at a burst rate of 2 seconds.
ROC800-Series	Up to 5 wired multidrop devices per HART channel, or up to 60 <i>WirelessHART</i> devices per RTU at a burst rate of 4 seconds.
ControlWave® Micro	Up to 5 wired multidrop devices per HART channel, or up to 100 <i>WirelessHART</i> devices per RTU at a burst rate of 8 seconds.

### Compatibility<sup>1</sup>

ROCLINK™ Configuration Software	Version 2.40 or newer
ROC800-Series	Firmware version 3.60 or newer
ROC800L	Firmware version 1.40 or newer
FloBoss 107	Firmware version 1.70 or newer
ControlWave Micro	Firmware version 5.71 or newer
IEC62591 Module	Firmware version 1.10 or newer
HART2 Module	Firmware version 1.15 or newer
Distributed RTU™ Network Bundle	Firmware version 1.00 or newer

<sup>1</sup> To configure HART2 and IEC62591 modules, you must install ROCLINK 800 or TechView.

**Note:** Field Tools cannot reside on the same PC as OpenEnterprise (OE), OpenBSI (OBSI) Network Edition, or ObjectServer.

For customer service and technical support, visit [www.EmersonProcess.com/Remote/Support](http://www.EmersonProcess.com/Remote/Support).

**Global Headquarters,  
North America, and Latin America:**

Emerson Automation Solutions  
Remote Automation Solutions  
6005 Rogerdale Road  
Houston, TX 77072 U.S.A.  
T +1 281 879 2699 | F +1 281 988 4445  
[www.EmersonProcess.com/Remote](http://www.EmersonProcess.com/Remote)

**Europe:**

Emerson Automation Solutions  
Remote Automation Solutions  
Unit 8, Waterfront Business Park  
Dudley Road, Brierley Hill  
Dudley UK DY5 1LX  
T +44 1384 487200 | F +44 1384 487258

**Middle East/Africa:**

Emerson Automation Solutions  
Remote Automation Solutions  
Emerson FZE  
P.O. Box 17033  
Jebel Ali Free Zone – South 2  
Dubai U.A.E.  
T +971 4 8118100 | F +971 4 8865465

**Asia-Pacific:**

Emerson Automation Solutions  
Remote Automation Solutions  
1 Pandan Crescent  
Singapore 128461  
T +65 6777 8211 | F +65 6777 0947

© 2014–2018 Remote Automation Solutions, a business unit of Emerson Automation Solutions. All rights reserved.

This publication is for informational purposes only. While every effort has been made to ensure accuracy, this publication shall not be read to include any warranty or guarantee, express or implied, including as regards the products or services described or their use or applicability. Remote Automation Solutions (RAS) reserves the right to modify or improve the designs or specifications of its products at any time without notice. All sales are governed by RAS terms and conditions which are available upon request. RAS accepts no responsibility for proper selection, use or maintenance of any product, which remains solely with the purchaser and/or end-user.