

What's New in Local Display Manager?

Version 4.07.00

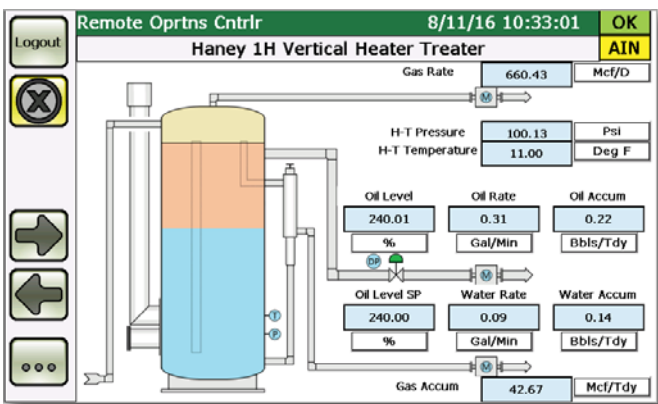


New color scheme for screens

Screens use more readable colors – shades of white and ivory with a distinctive green header – that are now standardized across all program screens.

New support for the Beijer T7BR/T15BR display series

The project supports both A and T series displays. Since the T series uses an Intel processor instead of an ARM processor and a new version of Windows CE, the load is different and new drivers have to be loaded in the process.

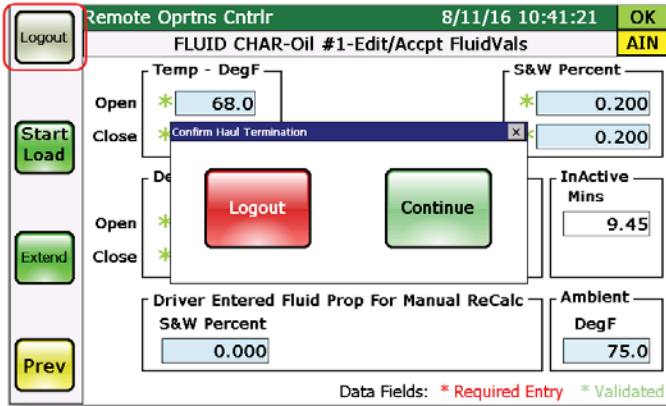


- Transfer Client
 - ROC800 A7 Display Transfer Client v4.07.01
 - ROC800 A12 Display Transfer Client v4.07.01
 - ROC800 T7BR Display Transfer Client v4.07.01
 - ROC800 T15BR Display Transfer Client v4.07.01

Confirmation dialog prevents accidental logouts

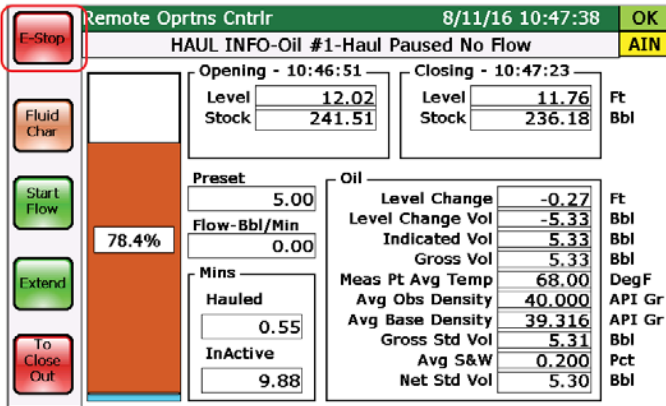
Version 4.07.02 now includes a dialog that asks for confirmation for haul termination. This resolves a customer issue when the Logout button was accidentally pressed and prematurely terminated a haul. The confirmation dialog provides an essential safeguard.

The availability of the Logout button has also changed. The previous version hides the Logout button after a valid login, and redisplay the button only after a haul has been closed out.



E-Stop button included to end a haul

Version 4.07.02 includes a red E-Stop button which can terminate a haul in the event of an emergency. The program displays the E-Stop button during the haul and hides it when the haul begins to close out.



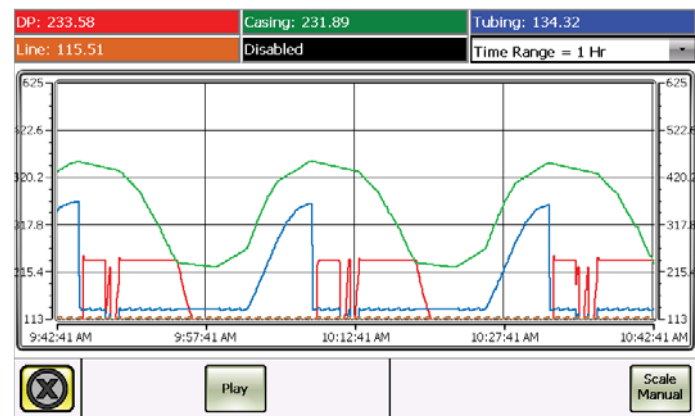
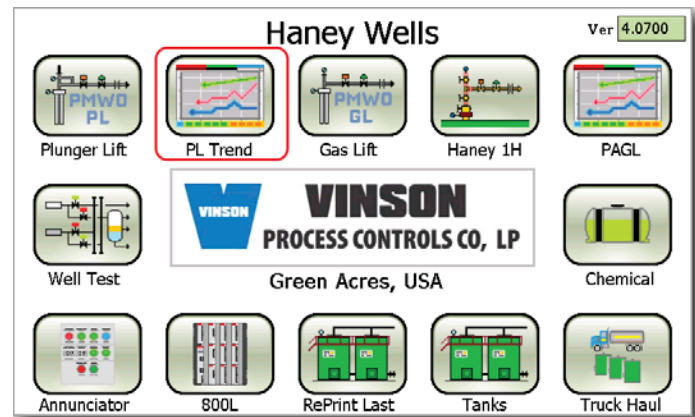
New historical chart screens accessible from front buttons

ROC800 Series

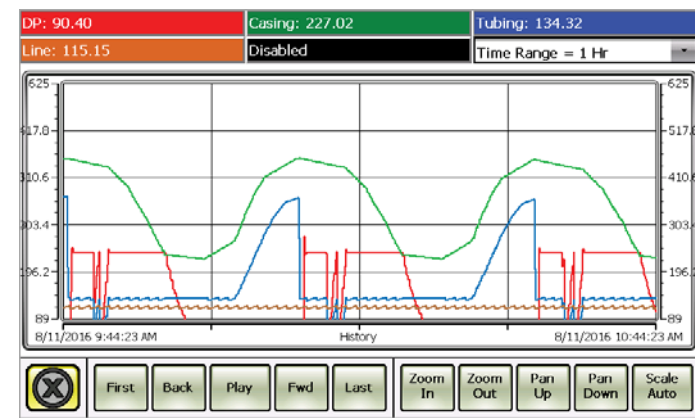
- 2 - Daily charts with second resolution (5 Pens each);
- 2 - Monthly charts with minute resolution (5 Pens each).
- Points trended must be defined in List 59 & 60.

FloBoss™ 107 Series

- 1 - Daily charts with second resolution (5 Pens each);
- 1 - Monthly charts with minute resolution (5 Pens each).
- Points trended must be defined in List 9 & 10.



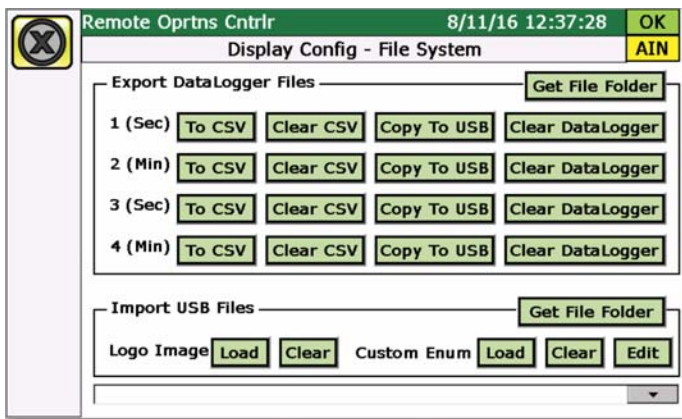
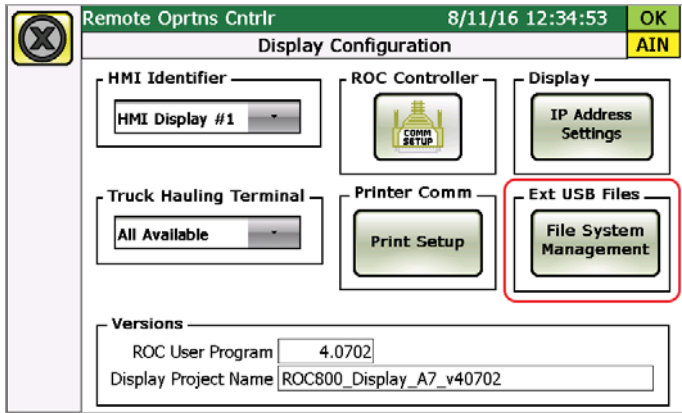
Minute trend of a plunger lift



Same minute trend of a plunger lift with the selections for selecting available history and manual scaling

Ability to export stored trend data via USB as .CSV file

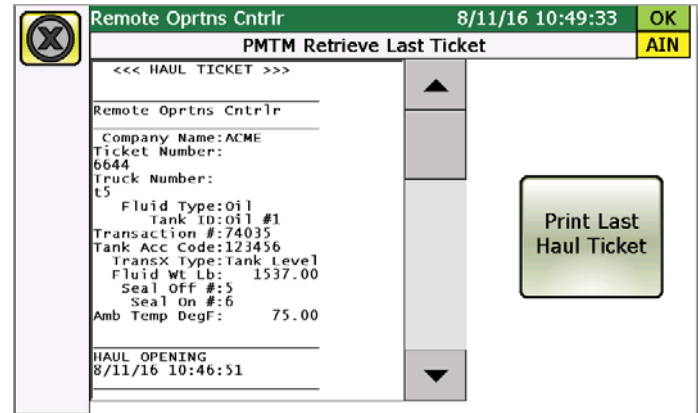
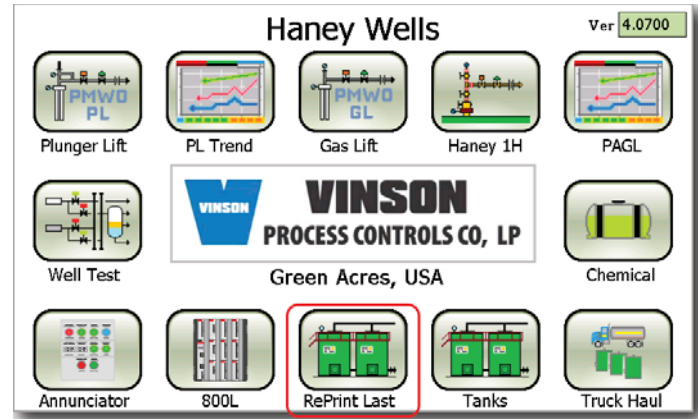
Available history in the Beijer can be exported to a USB as a .CSV file.



PMTM Retrieve Last Ticket screen

Last haul ticket can be previewed and printed.

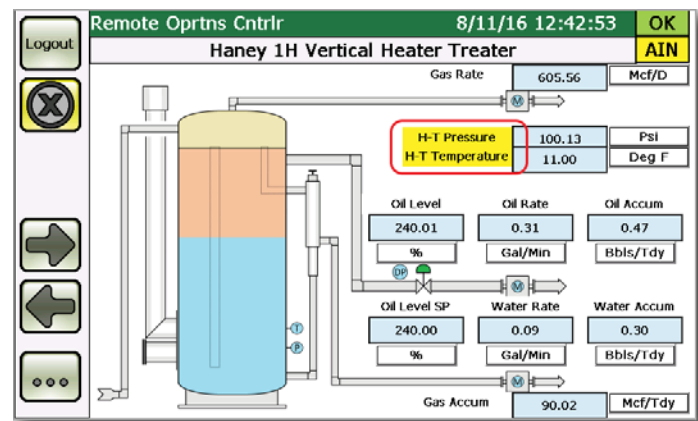
Customers expressed the need to reprint the last haul ticket in the event of a paper jam or printer error. The last haul ticket printed is stored in the Beijer and can be called up and reprinted.



Shows an overview of the ticket to be reprinted and the print button

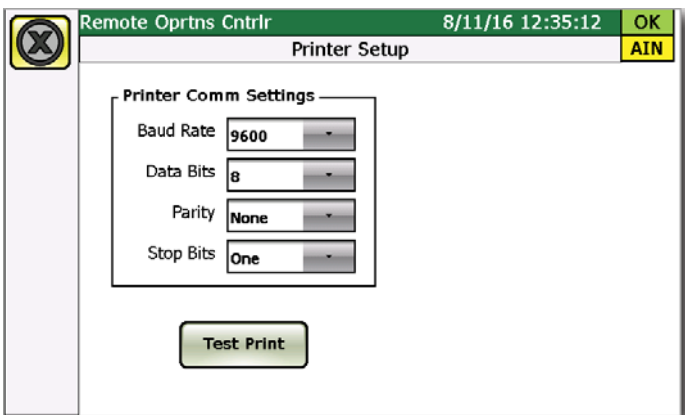
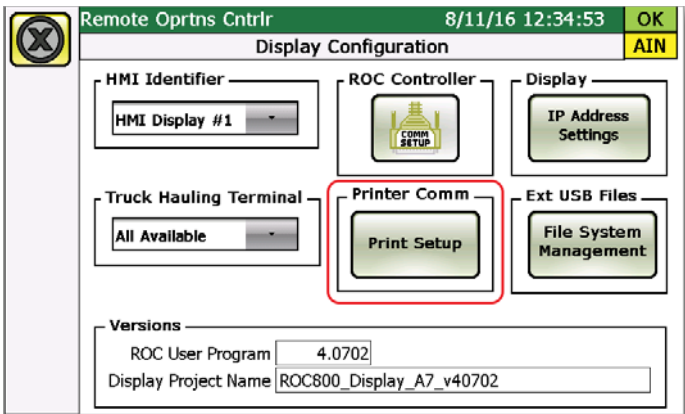
Yellow highlighting indicates bypass status

If a value has a bypass assigned to it and the bypass is active, the description text highlights in yellow.



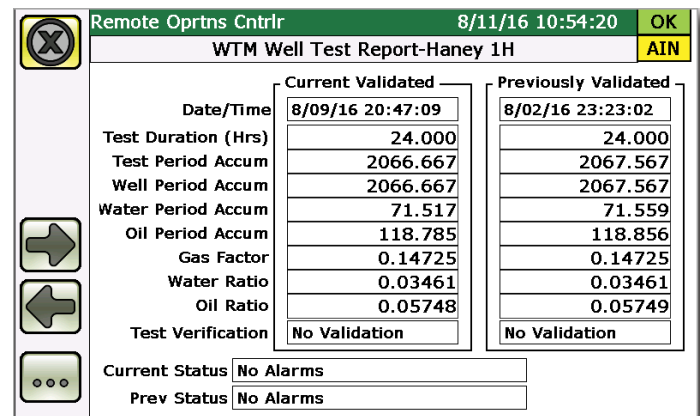
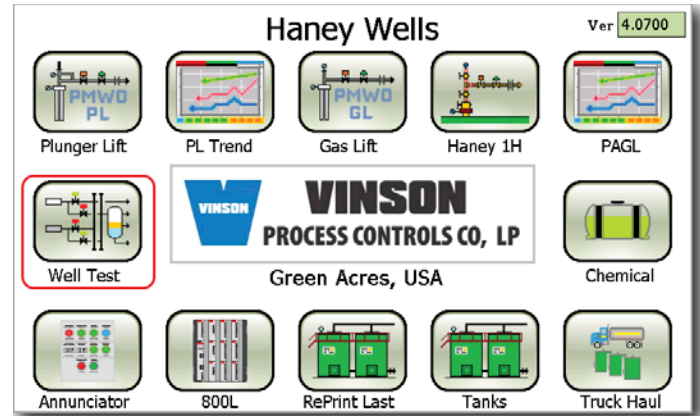
Ticket printer port communication configuration with test print button

When printing to a ticket printer through the Beijer display port, the printer communication settings are now configurable and a test print can be generated to validate communications. The printer still requires a USB-to-RS232 adapter that supports the FCDI printer driver.



Support for FloBoss 107 Well Test Manager version 1.0

A new version of Well Test Manager is available for the FloBoss 107. It supports up to 12 wells and operates in the same fashion as the ROC800 version of Well Test Manager with the exception of a limited implementation of the valve automation and feedback functions.



Plunger age and dry arrivals to cycle stats screen as supported in PMWO 4.3.1

As supported in version 4.03.01 of PM Well Optimization, the cycle stats screen includes the plunger age that can be reset from the screen and the Dry Arrivals tracking information.

Cycles		Arrivals		NonArrivals		DryArrivals	
Today	5	5	0	0	0	0	0
Yest	59	59	0	0	0	0	0
Total	6006	6004	2	0	0	0	0

Plunger Age		Vent Mins		Vents	
Days	2	Today	0.00		0
Cycles	113	Yest	0.00		0
Replace Date	160809	This Month	0.00	Total	0
YYMMDD		Prev Month	0.00		

Auto-detect revisions of PM user applications and display the correct screen based on functionality

Supports current versions of applications and future releases. The Beijer can detect the version of the Application installed and display the correct screen version to match up with included functionality.

Supported versions of user programs

PMTM	4.08.01
PMWO	4.03.01
PMWTM	4.13
PMSC	4.07.01
PMCM	4.00.02



**Global Headquarters
North America and Latin America**
Emerson Process Management
Remote Automation Solutions
6005 Rogerdale Road
Houston, TX, USA 77072
T +1 281 879 2699
F +1 281 988 4445

www.EmersonProcess.com/Remote



Europe
Emerson Process Management
Remote Automation Solutions
Unit 8, Waterfront Business Park
Dudley Road, Brierley Hill
Dudley, UK DY5 1LX
T +44 1384 487200
F +44 1384 487258



Middle East and Africa
Emerson Process Management
Remote Automation Solutions
Emerson FZE
PO Box 17033
Jebel Ali Free Zone - South 2
Dubai, UAE
T +971 4 8118100
F +1 281 988 4445



Asia Pacific
Emerson Process Management
Remote Automation Solutions
3A International Business Park
#11-10/18, Icon@IBP, Tower B
Singapore 609935
T +65 6777 8211
F +65 6777 0947

© 2016 Remote Automation Solutions, a business unit of Emerson Process Management. All rights reserved.

This publication is for informational purposes only. While every effort has been made to ensure accuracy, this publication shall not be read to include any warranty or guarantee, express or implied, including as regards the products or services described or their use or applicability. Remote Automation Solutions (RAS) reserves the right to modify or improve the designs or specifications of its products at any time without notice. All sales are governed by RAS terms and conditions which are available upon request. RAS accepts no responsibility for proper selection, use or maintenance of any product, which remains solely with the purchaser and/or end-user.

Find us in social media

RemoteAutomationSolutions
 Remote Automation Solutions Community
 Emerson_RAS
 Remote Automation Solutions