

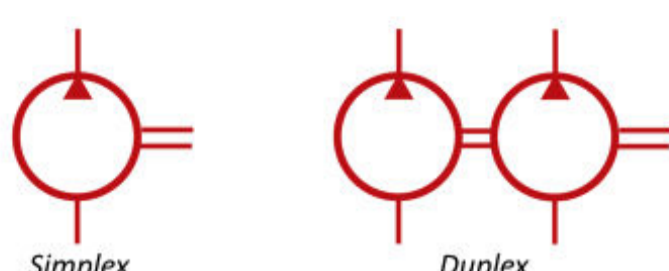
X Oil Pumps



- Rotating swash plate design
- Pressures up to 1040 bar
- Flows up to 41.27 l/m (10.894 USg/m)
- 316 stainless and carbon steel case options
- Flow/pressure combinations within 15 kw range
- Duplex operation option available

The high pressure Type X hydraulic pump is available with either three or six axial pistons actuated by a single rotating swash plate.

The six piston version can also be supplied with duplex deliveries which may be used for simultaneous high and low pressure applications when used in conjunction with an automatic unloading valve. Other output combinations are available.



Various combinations of flows and pressures are possible within the 15 kw range up to a maximum pressure of 1040 bar (15,080 psi) and a flow up to 41.27 litres/min (10.894). See the table below.

Installation

Rotation is bi-directional and the pump may be mounted horizontally or vertically.

A suction filter of 150 microns or better should be used. Finer filtration is desirable for the pump life, but is important that the inlet flowrate to the pump is not restricted and no more than -2 in.Hg is measured in the suction pipework under pumping conditions. Where possible a positive pressure should be maintained in the suction pipework under flowing conditions. When the pump is stationary the suction line should be kept under positive pressure to allow priming.

Fluids

A mineral-based oil is recommended with additives to resist corrosion, oxidation and foaming. The operating viscosity should be between 15 and 100 cst. Consult the factory for viscosities outside this range.

Temperature

The operating temperature range is -20°C to +60°C (Ambient)

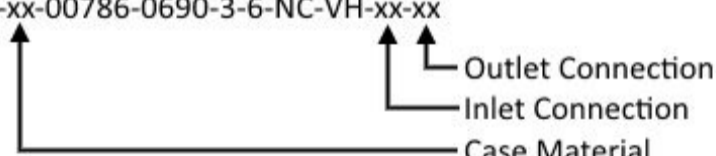
Weight

35 Kg

Part Number	Cylinders	Flow	Flow @ 1450 RPM		Flow @ 1750 RPM		Pressure bar
		cc/rev	l/m	Usg/m	l/m	Usg/m	
X-xx-00117-0690-3-5-NC-VH-xx-xx	3	1.17	1.70	0.448	2.05	0.541	690
X-xx-00159-0690-3-5-NC-VH-xx-xx	3	1.59	2.31	0.609	2.78	0.735	690
X-xx-00208-0690-3-5-NC-VH-xx-xx	3	2.08	3.02	0.796	3.64	0.961	690
X-xx-00234-0690-3-6-NC-VH-xx-xx	3	2.34	3.39	0.896	4.10	1.081	690
X-xx-00320-0690-3-6-NC-VH-xx-xx	3	3.2	4.64	1.225	5.60	1.478	690
X-xx-00351-0690-3-4-NC-VH-xx-xx	3	3.51	5.09	1.344	6.14	1.622	690
X-xx-00416-0690-3-6-NC-VH-xx-xx	3	4.16	6.03	1.592	7.28	1.922	690
X-xx-00480-0690-3-4-NC-VH-xx-xx	3	4.8	6.96	1.837	8.40	2.218	690
X-xx-00625-0690-3-4-NC-VH-xx-xx	3	6.25	9.06	2.393	10.94	2.888	690
X-xx-00786-0690-3-6-NC-VH-xx-xx	3	7.86	11.40	3.009	13.76	3.631	690
X-xx-00979-0520-3-4-NC-VH-xx-xx	3	9.79	14.20	3.748	17.13	4.523	520
X-xx-01179-0435-3-4-NC-VH-xx-xx	3	11.79	17.10	4.513	20.63	5.447	435
X-xx-00720-0690-6-4-NC-VH-xx-xx	6	7.2	10.44	2.756	12.60	3.326	690
X-xx-00960-0520-6-4-NC-VH-xx-xx	6	9.6	13.92	3.675	16.80	4.435	520
X-xx-01250-0410-6-4-NC-VH-xx-xx	6	12.5	18.13	4.785	21.88	5.775	410
X-xx-01580-0330-6-4-NC-VH-xx-xx	6	15.8	22.91	6.048	27.65	7.300	330
X-xx-01958-0260-6-4-NC-VH-xx-xx	6	19.58	28.39	7.495	34.27	9.046	260
X-xx-02358-0220-6-4-NC-VH-xx-xx	6	23.58	34.19	9.026	41.27	10.894	220
High Pressure Versions							
X-xx-00117-1040-3-5-NC-VH-xx-xx	3	1.17	1.70	0.448	2.05	0.541	1040
X-xx-00159-1040-3-5-NC-VH-xx-xx	3	1.59	2.31	0.609	2.78	0.735	1040
X-xx-00234-1040-3-6-NC-VH-xx-xx	3	2.34	3.39	0.896	4.10	1.081	1040
X-xx-00320-1040-3-6-NC-VH-xx-xx	3	3.2	4.64	1.225	5.60	1.478	1040

Additional Options

X-xx-00786-0690-3-6-NC-VH-xx-xx



Case Material

- 00 - Stainless Steel Construction
- 01 - Carbon Steel Construction

Inlet Connection Options

- 04 - 3/4" BSP Female Inlet
- 09 - 3/4" NPT Female Inlet

Outlet Connection Options

- 02 - 3/8" BSP Female Outlet (Pressures up to 700 bar)
- 03 - 1/2" BSP Female Outlet (Pressures up to 700 bar)
- 07 - 3/8" NPT Female Outlet (Pressures up to 800 bar)
- 12 - 3/8" MP Female Outlet (Standard for 1040 bar pumps)

Dimensions

