

Big-Bend Cast Pulling Elbow

Conduit Systems Installations. For use with Threaded Rigid Metal Conduit and IMC.

CEC:
Listed for Ordinary Locations

Application

- Big-Bend Pulling Elbow is installed in conduit systems to provide 90° bends in conduit runs, pull outlets for conductors, access to conductors for maintenance and openings for making splices.

Features

- Plugged 1/2" outlets top and bottom for breather and drain.
- Conductors can be pulled straight through.
- Cover easily installed.

Standard Materials

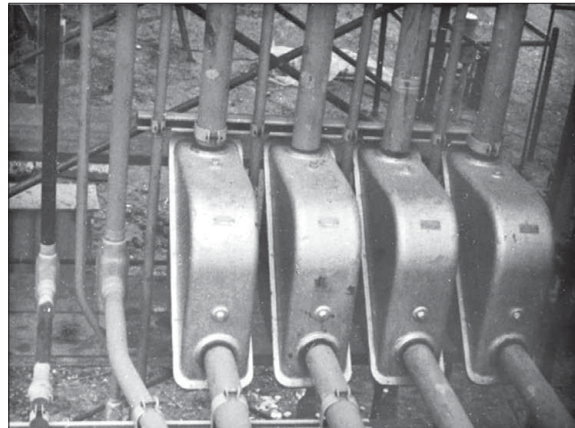
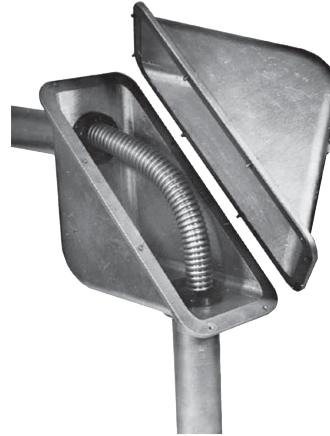
- Bodies and covers: copperfree (4/10 of 1% max.) aluminum
- Gaskets: composition
- Cover bolts: stainless steel

Standard Finishes

- Acrylic paint

CEC Certifications and Compliances

- CSA Standard: C22.2 No. 40
- CSA Certified: 043654



Conduit Systems Installations

Big-Bend Cast Pulling Elbow

Conduit Systems Installations. For use with Threaded Rigid Metal Conduit and IMC.

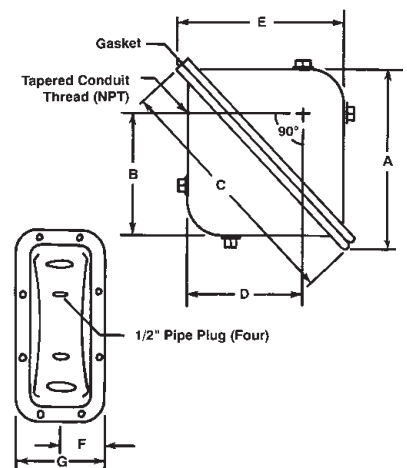
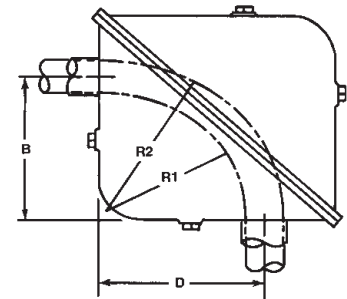
CEC:
Listed for Ordinary Locations

Bending Radius of Big-Bend Pulling Elbow

| Conduit Size (Inches) | Millimeters (Inches) | | Code | Catalog Number |
|--------------------------|----------------------|---------------|------|-------------------|
| | R1 | R2 | | |
| 1/2 | 208.0 (8.19) | 223.8 (8.81) | 050 | BB1-050 |
| 3/4 | 204.7 (8.06) | 225.6 (8.88) | 075 | BB1-075 |
| 1 | 200.2 (7.88) | 227.1 (8.94) | 100 | BB1-100 |
| 1-1/4 | 198.4 (7.81) | 235.0 (9.25) | 125 | BB1-125 |
| 1-1/2 | 195.3 (7.69) | 236.5 (9.31) | 150 | BB1-150 |
| 2 | 189.0 (7.44) | 241.3 (9.50) | 200 | BB1-200 |
| 2-1/2 | 184.2 (7.25) | 246.1 (9.69) | 250 | BB1-250 |
| 3 | 174.8 (6.88) | 252.5 (9.94) | 300 | BB1-300 |
| 3-1/2 | 169.9 (6.69) | 260.4 (10.25) | 350 | BB1-350 |
| 4 | 163.6 (6.44) | 266.7 (10.50) | 400 | BB1-400 |
| 1/2 | 331.7 (13.06) | 347.7 (13.69) | 050 | BB2-050 |
| 3/4 | 328.7 (12.94) | 349.3 (13.75) | 075 | BB2-075 |
| 1 | 323.9 (12.75) | 350.8 (13.81) | 100 | BB2-100 |
| 1-1/4 | 322.3 (12.69) | 358.9 (14.13) | 125 | BB2-125 |
| 1-1/2 | 319.0 (12.56) | 360.4 (14.19) | 150 | BB2-150 |
| 2 | 312.7 (12.31) | 365.3 (14.38) | 200 | BB2-200 |
| 2-1/2 | 308.1 (12.13) | 369.8 (14.56) | 250 | BB2-250 |
| 3 | 298.5 (11.75) | 376.2 (14.81) | 300 | BB2-300 |
| 3-1/2 | 293.6 (11.56) | 384.3 (15.13) | 350 | BB2-350 |
| 4 | 287.3 (11.31) | 390.7 (15.38) | 400 | BB2-400 |
| 1/2 | 331.7 (13.06) | 347.7 (13.69) | 050 | BB3-050 |
| 3/4 | 328.7 (12.94) | 349.3 (13.75) | 075 | BB3-075 |
| 1 | 323.9 (12.75) | 350.8 (13.81) | 100 | BB3-100 |
| 1-1/4 | 322.3 (12.69) | 358.9 (14.13) | 125 | BB3-125 |
| 1-1/2 | 319.0 (12.56) | 360.4 (14.19) | 150 | BB3-150 |
| 2 | 312.7 (12.31) | 365.3 (14.38) | 200 | BB3-200 |
| 2-1/2 | 308.1 (12.13) | 369.8 (14.56) | 250 | BB3-250 |
| 3 | 298.5 (11.75) | 376.2 (14.81) | 300 | BB3-300 |
| 3-1/2 | 293.6 (11.56) | 384.3 (15.13) | 350 | BB3-350 |
| 4 | 287.3 (11.31) | 390.7 (15.38) | 400 | BB3-400 |
| 5 | 274.6 (10.81) | 401.6 (15.81) | 500 | BB3-500 |
| 6 | 261.9 (10.31) | 416.1 (16.38) | 600 | BB3-600 |

Dimensions

| Size | BB1 | BB2 | BB3 |
|--------------------------|----------------------|-----------------|-----------------|
| Inside Dimensions | 12x12x6 | 18x18x6 | 18x18x8 |
| Approx. Shipping Wt/Unit | 8.2 kg (18 lb) | 14.5 kg (32 lb) | 21.8 kg (48 lb) |
| | Millimeters (Inches) | | |
| | BB1 | BB2 | BB3 |
| A | 323.9 (12.75) | 505.0 (19.88) | 505.0 (19.88) |
| B | 228.6 (9.00) | 355.6 (14.00) | 355.6 (14.00) |
| C | 476.3 (18.75) | 692.2 (27.25) | 698.5 (27.50) |
| D | 228.6 (9.00) | 355.6 (14.00) | 355.6 (14.00) |
| E | 323.9 (12.75) | 505.0 (19.88) | 505.0 (19.88) |
| F | 98.6 (3.88) | 98.6 (3.88) | 127.0 (5.00) |
| G | 196.9 (7.75) | 196.9 (7.75) | 254.0 (10.00) |



Appleton

COMMERCIAL AND INDUSTRIAL FITTINGS: CONDUIT BODIES