


SmartProcess™  
Oil & Gas Applications

# Surface Control Manager

Remote Automation Solutions



**EMERSON™**  
Process Management

A photograph of an oil field at sunset. The sky is a mix of blue and orange. In the foreground, several large metal pumpjacks are visible, their structures silhouetted against the bright sky. The pumpjacks are in various stages of their cycle, with some arms raised and others lowered. In the background, more pumpjacks and some utility poles are visible, creating a sense of a large-scale industrial operation.

# Simplified controls for optimized functionality

Surface Control Manager allows the user to configure the FloBoss™ 107 or the ROC800 to perform simplified control, logic, and mathematical functions using easy-to-configure pre-designed menus.

Surface Control Manager is an integrated component of the Production Manger Suite and can be used to provide both permanent and temporary shut-ins for associated wells being managed for optimization, allocation, and haul tank load outs in the Tank Manager user program.

Surface Control Manager's key features are:

- Action Block: Configurable Control Logic Modules
  - Math and Boolean logic operators supported
  - Browseable parameters, including parameters from other Suite applications
- Support for API industry standard, class-based logic bypass maintenance
- Linked action blocks, accumulators and configurable accumulators
- On/Off run timers providing output pulse configurations

To configure and operate the Surface Control Manager program, you use two program-specific screens:

- PMSC (Production Manager Surface Control) Action Blocks
- PMSC Utilities

# PMSC Action Blocks

Action Blocks are configurable control logic modules that have both math and Boolean logic operators. They are supported and browseable parameters that also include parameters from other suite applications.

The Action Blocks screen allows the user to:

- Set the logic block name, enable the logic tag, and display the input's live value
- Provide four types of bypass and allows you to activate the manual latched bypass, and enables browsing for other action blocks to be used to define the bypass functionality
- Set the logic of chain, allow browsing for a previous action block for comparison, as well as select the desired output type (permanent or temporary shutdown)
- Selects status that trips the output
- Log alarms, recording when action blocks trip or clear



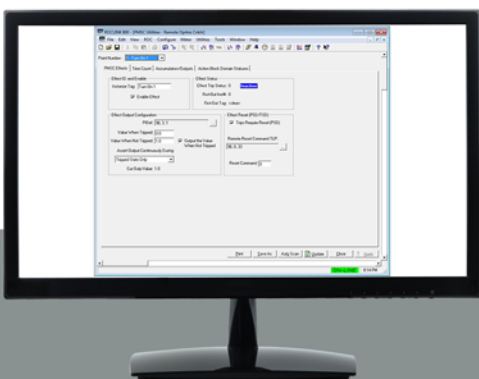
Action Blocks have five main sections: Block Logic Operation, Bypasses, Chain, Action Output, and Alarm Logging.

# PMSC Utilities

The Surface Control Manager program supports up to 144 action blocks and 36 sets of utilities. Three versions of the program are provided for the ROC800 with increasing quantities of action blocks and utilities to best fit your application. A single version of the program with 48 action blocks and 12 utilities is provided for the FloBoss107.

## Effects

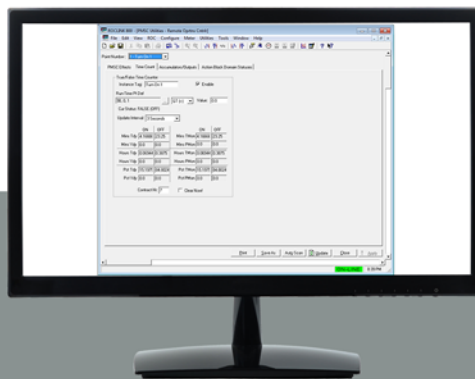
Provides a flexible output action to be performed when one or more associated action blocks are tripped.



Effects tab

## Configure Time Counters

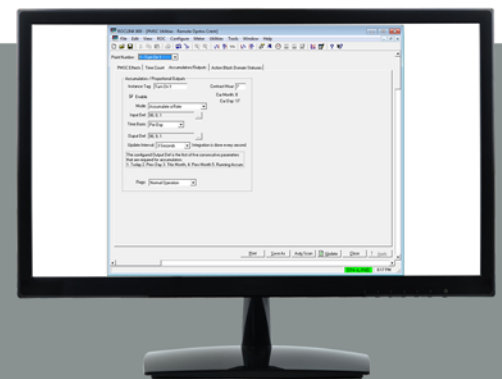
Time Counters accumulate and record both run and idle times for motors, compressors, and other devices.



Time Count tab

## Accumulators and Outputs

This function provides daily, monthly and ongoing accumulations to be recorded given an analog or Modbus flow rate. The Output functionality provides an easy-to-configure method of driving an analog or discrete output based on a user selected input, such as a flow rate or accumulation.



Accumulators/Outputs tab

# Find us around the corner or around the world

For a complete list of locations please visit us at [www.EmersonProcess.com/Remote](http://www.EmersonProcess.com/Remote)



© 2014-2015 Remote Automation Solutions, a business unit of Emerson Process Management. All rights reserved.

Emerson Process Management Ltd, Remote Automation Solutions (UK), is a wholly owned subsidiary of Emerson Electric Co. doing business as Remote Automation Solutions, a business unit of Emerson Process Management. FloBoss, ROCLINK, ControlWave, Helicoid, and OpenEnterprise are trademarks of Remote Automation Solutions. AMS, PlantWeb, and the PlantWeb logo are marks owned by one of the companies in the Emerson Process Management business unit of Emerson Electric Co. Emerson Process Management, Emerson and the Emerson logo are trademarks and service marks of the Emerson Electric Co. All other marks are property of their respective owners.

The contents of this publication are presented for informational purposes only. While every effort has been made to ensure informational accuracy, they are not to be construed as warranties or guarantees, express or implied, regarding the products or services described herein or their use or applicability. Remote Automation Solutions reserves the right to modify or improve the designs or specifications of such products at any time without notice. All sales are governed by Remote Automation Solutions' terms and conditions which are available upon request. Remote Automation Solutions does not assume responsibility for the selection, use or maintenance of any product. Responsibility for proper selection, use and maintenance of any Remote Automation Solutions product remains solely with the purchaser and end-user.

## Find us in social media



RemoteAutomationSolutions



Emerson\_RAS



Remote Automation Solutions Community



Remote Automation Solutions



### Global Headquarters

Emerson Process Management  
Remote Automation Solutions  
6005 Rogerdale Road  
Houston, TX, USA 77072  
T +1 281 879 2699  
F +1 281 988 4445

[www.EmersonProcess.com/Remote](http://www.EmersonProcess.com/Remote)



### Europe

Emerson Process Management  
Remote Automation Solutions  
Unit 8, Waterfront Business Park  
Dudley Road, Brierley Hill  
Dudley, UK DY5 1LX  
T +44 1384 487200  
F +44 1384 487258



### North America and Latin America

Emerson Process Management  
Remote Automation Solutions  
6005 Rogerdale Road  
Houston, TX, USA 77072  
T +1 281 879 2699  
F +1 281 988 4445



### Middle East and Africa

Emerson Process Management  
Remote Automation Solutions  
Emerson FZE  
PO Box 17033  
Jebel Ali Free Zone - South 2  
Dubai, UAE  
T +971 4 8118100  
F +1 281 988 4445



### Asia Pacific

Emerson Process Management  
Remote Automation Solutions  
1 Pandan Crescent  
Singapore 128461  
T +65 6777 8211  
F +65 6777 0947

Remote Automation Solutions

