

# Class 650 Type IG Aluminum Junction Boxes

NEC/CEC — G Suffix Only:  
NEMA 4

NEC/CEC — P Suffix Only:  
Class II, Division 1 and 2, Groups E, F, G  
Class III  
NEMA 9EFG

## Applications

- Class 650 type IG Junction Boxes may be ordered as either NEMA 4 or NEMA 9.
- Type IG enclosures may be used to house instruments, controllers or control stations. They may also be used as junction boxes or terminal boxes.
- IG gasketed enclosures have sufficient wall thickness to permit almost unrestricted conduit drilling on all sides. They allow full utilization of inside space at a minimum cost.

## Features

- Wide selection of types and sizes.
- Hex head cover bolts.
- Full clear opening gives maximum internal space.
- Wall thickness permits drilling and tapping for conduit to meet customer requirements.
- Mounting lugs supplied.

## Standard Materials

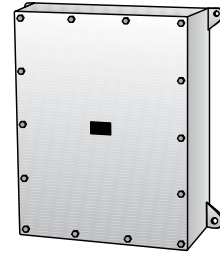
- Box and cover: copperfree (4/10 of 1% max.) aluminum
- Cover bolts: stainless steel

## Standard Finishes

- Box and cover: gray epoxy powder coat
- For factory installed mounting panel, use suffix **-N**. For field installed mounting panel, consult factory.

## NEC/CEC Certifications and Compliances

- UL Standard: 886
- CSA Certified: LR-20945



Type IG Junction Box

Hinges (Stainless Steel) ①		
Type IG Box Size	Catalog Number	No. of Hinges Per Set
Up to 24" x 24"	HIG22SS	2

ENCLOSURES AND JUNCTION BOXES: NEC/CEC WEATHERPROOF/DUSTPROOF JUNCTION AND OUTLET BOXES

OZ/GEDNEY

① Hinges which can be furnished at additional cost, will be located on the long side of the box and on the left side unless otherwise specified.

# Class 650 Type IG Aluminum Junction Boxes

NEC/CEC — G Suffix Only:  
NEMA 4

NEC/CEC — P Suffix Only:  
Class II, Division 1 and 2, Groups E, F, G  
Class III  
NEMA 9EFG

ENCLOSURES AND JUNCTION BOXES: NEC/CEC WEATHERPROOF/DUSTPROOF JUNCTION AND OUTLET BOXES

Inside Dimensions ① Millimeters (Inches)			Wall Thickness Millimeters (Inches)	Max. Conduit Millimeters (Inches)	Optional Mounting Pan Millimeters (Inches)		Weight kg (lbs)	Catalog Number NEMA 4	Catalog Number NEMA 9
Width	Height	Depth			Width	Height			
98.55 (3.88)	149.35 (5.88)	101.60 (4.00)	7.87 (0.31)	50.80 (2.00)	82.55 (3.25)	101.60 (4.00)	127.00 (5.00)	—	IG464P
152.40 (6.00)	203.20 (8.00)	101.60 (4.00)	6.35 (0.25)	19.05 (0.75)	133.35 (5.25)	152.40 (6.00)	203.00 (8.00)	—	IG684P
196.85 (7.75)	196.85 (7.75)	101.60 (4.00)	6.35 (0.25)	19.05 (0.75)	152.40 (6.00)	152.40 (6.00)	279.00 (11.00)	—	IG884P
200.15 (7.88)	200.15 (7.88)	152.40 (6.00)	7.87 (0.31)	50.80 (2.00)	152.40 (6.00)	152.40 (6.00)	330.00 (13.00)	IG886G	IG886P
203.20 (8.00)	254.00 (10.00)	152.40 (6.00)	6.35 (0.25)	19.05 (0.75)	136.65 (5.38)	234.95 (9.25)	356.00 (14.00)	—	IG8106P
203.20 (8.00)	304.80 (12.00)	152.40 (6.00)	6.35 (0.25)	19.05 (0.75)	136.65 (5.38)	234.95 (9.25)	406.00 (16.00)	—	IG8126P
295.40 (11.63)	295.40 (11.63)	152.40 (6.00)	9.65 (0.38)	50.80 (2.00)	228.60 (9.00)	228.60 (9.00)	559.00 (22.00)	IG12126G	IG12126P
295.40 (11.63)	346.20 (13.63)	203.20 (8.00)	9.65 (0.38)	50.80 (2.00)	228.60 (9.00)	304.80 (12.00)	864.00 (34.00)	IG12148G	—
355.60 (14.00)	457.20 (18.00)	203.20 (8.00)	9.65 (0.38)	50.80 (2.00)	304.80 (12.00)	419.10 (16.5)	1397.00 (55.00)	IG14188G	—
457.20 (18.00)	457.20 (18.00)	152.40 (6.00)	9.65 (0.38)	50.80 (2.00)	381.00 (15.00)	381.00 (15.00)	1194.00 (47.00)	IG18186G	IG18186P
457.20 (18.00)	457.20 (18.00)	254.00 (10.00)	9.65 (0.38)	50.80 (2.00)	381.00 (15.00)	381.00 (15.00)	1626.00 (64.00)	IG181810G	IG181810P
457.20 (18.00)	457.20 (18.00)	304.80 (12.00)	11.18 (0.44)	101.60 (4.00)	381.00 (15.00)	381.00 (15.00)	1930.00 (76.00)	—	IG181812P
457.20 (18.00)	609.60 (24.00)	203.20 (8.00)	11.18 (0.44)	101.60 (4.00)	381.00 (15.00)	533.40 (21.00)	1854.00 (73.00)	IG18248G	IG18248P
603.25 (23.75)	603.25 (23.75)	304.80 (12.00)	11.180 (0.44)	101.60 (4.00)	533.40 (21.00)	533.40 (21.00)	2743.00 (108.00)	IG242412G ②	—
762.00 (30.00)	762 (30.00)	203.20 (8.00)	12.70 (0.5)	101.60 (4.00)	711.20 (28.00)	711.20 (28.00)	4699.00 (185.00)	IG30308G ②	IG30308P ②
762.00 (30.00)	762.00 (30.00)	304.80 (12.00)	12.70 (0.5)	101.60 (4.00)	711.20 (28.00)	711.20 (28.00)	4877.00 (192.00)	—	—

① Inside dimensions are from wall to wall of enclosure and from inside box flange.

② Use of hinges is recommended.

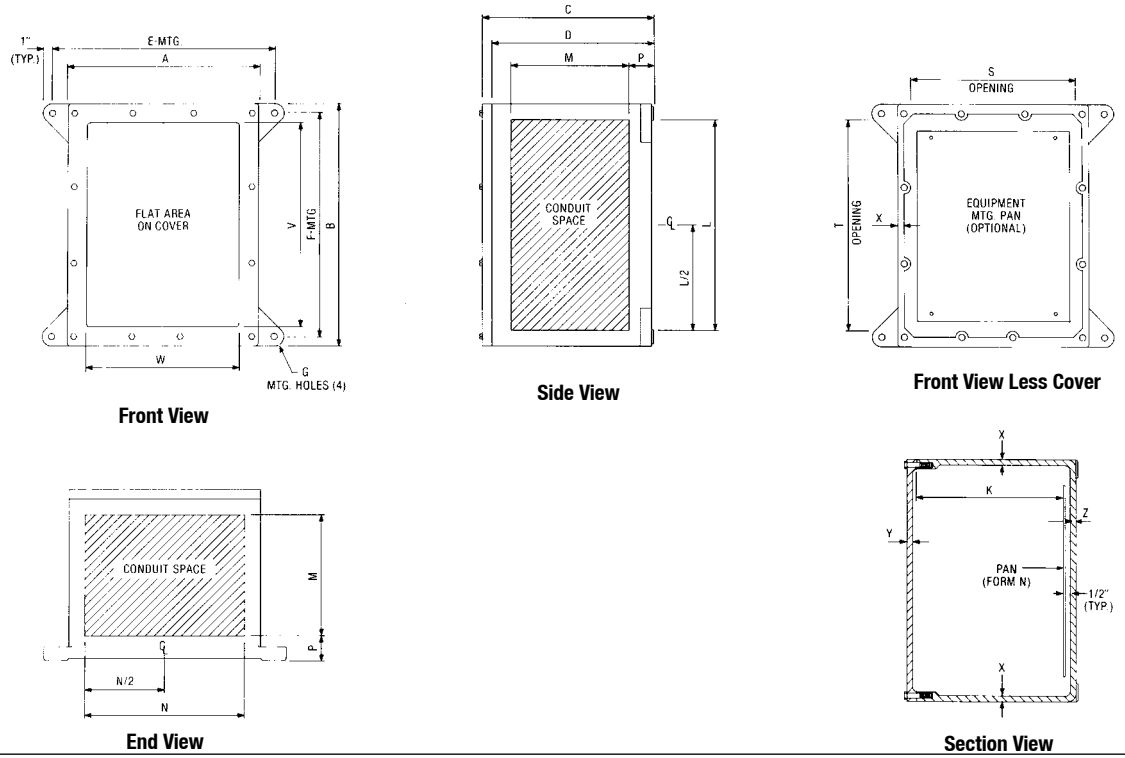
③ Hinges which can be furnished at additional cost, will be located on the long side of the box and on the left side unless otherwise specified.

# Class 650 Type IG Aluminum Junction Boxes

NEC/CEC — G Suffix Only:  
NEMA 4

NEC/CEC — P Suffix Only:  
Class II, Division 1 and 2, Groups E, F, G  
Class III  
NEMA 9EFG

## Dimensional Data



ENCLOSURES AND JUNCTION BOXES: NEC/CEC WEATHERPROOF/DUSTPROOF JUNCTION AND OUTLET BOXES

OZ/GEDNEY

# Class 650 Type IG Aluminum Junction Boxes

NEC/CEC — G Suffix Only:  
NEMA 4

NEC/CEC — P Suffix Only:  
Class II, Division 1 and 2, Groups E, F, G  
Class III  
NEMA 9EFG

ENCLOSURES AND JUNCTION BOXES: NEC/CEC WEATHERPROOF/DUSTPROOF JUNCTION AND OUTLET BOXES

Overall Enclosure Millimeters (Inches)			Enclosure Mounting Millimeters (Inches)				Depth K	Catalog Number NEMA 4	Catalog Number NEMA 9
A	B	C	D	E	F	G			
117.60 (4.63)	168.40 (6.63)	123.95 (4.88)	114.30 (4.50)	146.05 (5.75)	146.05 (5.75)	7.87 (0.31)	101.60 (4.00)	—	IG464P
168.40 (6.63)	219.20 (8.63)	123.95 (4.88)	114.30 (4.50)	196.85 (7.75)	193.80 (7.63)	7.87 (0.31)	101.60 (4.00)	—	IG684P
219.20 (8.63)	219.20 (8.63)	127.00 (5.00)	115.82 (4.56)	257.3 (10.13)	193.80 (7.63)	9.65 (0.38)	101.60 (4.00)	—	IG884P
220.73 (8.69)	220.73 (8.69)	176.28 (6.94)	165.10 (6.50)	247.65 (9.75)	190.50 (7.50)	7.87 (0.31)	152.40 (6.00)	IG886G	IG886P
222.25 (8.75)	273.05 (10.75)	176.28 (6.94)	165.10 (6.50)	250.95 (9.88)	244.60 (9.63)	9.65 (0.38)	153.92 (6.06)	—	IG8106P
219.20 (8.63)	320.80 (12.63)	174.75 (6.88)	165.10 (6.50)	247.65 (9.75)	292.10 (11.50)	11.18 (0.44)	152.40 (6.00)	—	IG8126P
317.50 (12.50)	317.50 (12.50)	184.15 (7.25)	171.45 (6.75)	352.55 (13.88)	289.05 (11.38)	11.18 (0.44)	155.70 (6.13)	IG12126G	IG12126P
319.02 (12.56)	369.82 (14.56)	234.95 (9.25)	219.20 (8.63)	358.90 (14.13)	336.55 (13.25)	14.22 (0.56)	203.2 (8.00)	IG12148G	—
381.00 (15.00)	482.60 (19.00)	241.30 (9.50)	212.85 (8.38)	412.75 (16.25)	441.45 (17.38)	14.22 (0.56)	208.03 (8.19)	IG14188G	—
482.60 (19.00)	482.60 (19.00)	190.50 (7.50)	174.75 (6.88)	533.40 (21.00)	438.15 (17.25)	14.22 (0.56)	155.7 (6.13)	IG18186G	IG18186P
482.60 (19.00)	482.60 (19.00)	292.10 (11.50)	276.35 (10.88)	533.40 (21.00)	438.15 (17.25)	14.22 (0.56)	219.2 (8.63)	IG181810G	IG181810P
482.60 (19.00)	482.60 (19.00)	342.9 (13.50)	327.15 (12.88)	533.40 (21)	438.15 (17.25)	14.22 (0.56)	270.00 (10.63)	—	IG181812P
482.60 (19.00)	635.00 (25.00)	236.47 (9.31)	214.38 (8.44)	533.40 (21.00)	596.9 (23.50)	14.22 (0.56)	203.20 (8.00)	IG18248G	IG18248P
638.30 (25.13)	638.30 (25.13)	344.42 (13.56)	327.15 (12.88)	685.80 (27.00)	596.9 (23.50)	17.53 (0.69)	308.10 (12.13)	IG242412G	—
96.77 (3.81)	96.77 (3.81)	254.00 (10.00)	228.60 (9.00)	857.25 (33.75)	735.08 (28.94)	17.53 (0.69)	208.03 (8.19)	IG30308G	IG30308P
96.77 (3.81)	96.77 (3.81)	354.08 (13.94)	328.68 (12.94)	857.25 (33.75)	735.08 (28.94)	17.53 (0.69)	308.10 (12.13)	—	—

OZ/GEDNEY



# Class 650 Type IG Aluminum Junction Boxes

NEC/CEC — G Suffix Only:  
NEMA 4

NEC/CEC — P Suffix Only:  
Class II, Division 1 and 2, Groups E, F, G  
Class III  
NEMA 9EFG

Conduit Area Millimeters (Inches)			Clear Opening Millimeters (Inches)			Cover Flat Area Millimeters (Inches)		Wall Thickness Millimeters (Inches)			Catalog Number NEMA 4	Catalog Number NEMA 9
L	M	N	P	S	T	V	W	X	Y	Z		
114.30 (4.50)	76.20 (3.00)	63.50 (2.50)	19.05 (0.75)	73.15 (2.88)	123.95 (4.88)	50.80 (2.00)	101.60 (4.00)	7.87 (0.31)	6.35 (0.25)	7.87 (0.31)	—	IG464P
165.10 (6.50)	73.15 (2.88)	114.3 (4.50)	19.05 (0.75)	123.95 (4.88)	174.75 (6.88)	101.60 (4.00)	152.40 (6.00)	6.35 (0.25)	6.35 (0.25)	6.35 (0.25)	—	IG684P
165.10 (6.50)	73.15 (2.88)	165.10 (6.5)	19.05 (0.75)	168.4 (6.63)	168.4 (6.63)	155.70 (6.13)	155.70 (6.13)	6.35 (0.25)	6.35 (0.25)	6.35 (0.25)	—	IG884P
165.10 (6.50)	120.65 (4.75)	165.10 (6.50)	19.05 (0.75)	168.40 (6.63)	168.40 (6.63)	155.70 (6.13)	155.70 (6.13)	7.87 (0.31)	6.35 (0.25)	4.83 (0.19)	IG886G	IG886P
215.90 (8.50)	120.65 (4.75)	165.10 (6.50)	19.05 (0.75)	168.40 (6.63)	219.20 (8.63)	158.75 (6.25)	209.55 (8.25)	6.35 (0.25)	6.35 (0.25)	6.35 (0.25)	—	IG8106P
266.70 (10.50)	120.65 (4.75)	165.10 (6.50)	22.35 (0.88)	168.40 (6.63)	270.00 (10.63)	155.70 (6.13)	276.35 (10.88)	6.35 (0.25)	6.35 (0.25)	6.35 (0.25)	—	IG8126P
263.65 (10.38)	104.90 (4.13)	273.05 (10.75)	25.40 (1.00)	266.70 (10.50)	266.7 (10.5)	266.70 (10.5)	266.70 (10.5)	9.65 (0.38)	6.35 (0.25)	7.87 (0.31)	IG12126G	IG12126P
314.45 (12.38)	143.00 (5.63)	263.65 (10.38)	25.40 (1.00)	266.70 (10.50)	317.50 (12.50)	247.65 (9.75)	298.45 (11.75)	9.65 (0.38)	6.35 (0.25)	9.65 (0.38)	IG12148G	—
425.45 (16.75)	136.65 (5.38)	323.85 (12.75)	31.75 (1.25)	330.20 (13.00)	431.80 (17.00)	304.80 (12.00)	406.40 (16.00)	9.65 (0.38)	11.18 (0.44)	9.65 (0.38)	IG14188G	—
425.45 (16.75)	85.85 (3.38)	425.45 (16.75)	31.75 (1.25)	428.75 (16.88)	428.75 (16.88)	406.40 (16.00)	406.40 (16.00)	9.65 (0.38)	9.65 (0.38)	9.65 (0.38)	IG18186G	IG18186P
425.45 (16.75)	187.45 (7.38)	425.45 (16.75)	31.75 (1.25)	428.75 (16.88)	428.75 (16.88)	406.40 (16.00)	406.40 (16.00)	9.65 (0.38)	9.65 (0.38)	9.65 (0.38)	IG181810G	IG181810P
425.45 (16.75)	238.25 (9.38)	425.45 (16.75)	31.75 (1.25)	428.75 (16.88)	428.75 (16.88)	406.40 (16.00)	406.40 (16.00)	9.65 (0.38)	11.18 (0.44)	9.65 (0.38)	—	IG181812P
577.85 (22.75)	136.65 (5.38)	425.45 (16.75)	31.75 (1.25)	435.10 (17.13)	587.50 (23.13)	406.40 (16.00)	558.80 (22.00)	11.18 (0.44)	9.65 (0.38)	11.18 (0.44)	IG18248G	IG18248P
577.85 (22.75)	238.25 (9.38)	577.85 (22.75)	31.75 (1.25)	562.10 (22.13)	562.10 (22.13)	558.80 (22.00)	558.80 (22.00)	11.18 (0.44)	9.65 (0.38)	11.18 (0.44)	IG242412G	—
727.20 (28.63)	133.35 (5.25)	727.20 (28.63)	38.10 (1.50)	727.20 (28.63)	727.20 (28.63)	711.20 (28.00)	711.20 (28.00)	12.70 (0.50)	14.22 (0.56)	12.70 (0.50)	IG30308G	IG30308P
727.20 (28.63)	234.95 (9.25)	727.20 (28.63)	38.10 (1.50)	727.20 (28.63)	727.20 (28.63)	711.20 (28.00)	711.20 (28.00)	12.70 (0.50)	14.22 (0.56)	12.70 (0.50)	—	—

ENCLOSURES AND JUNCTION BOXES: NEC/CEC WEATHERPROOF/DUSTPROOF JUNCTION AND OUTLET BOXES

OZ/GEDNEY