

McGill™ LOCKBOX Electrical Plug Lockout

NEC/CEC:
Rated for Ordinary Locations

Applications

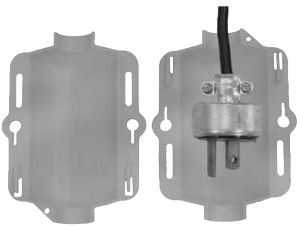
- Provides a positive lockout of the plug for cord connected electrical equipment when performing maintenance and service activities.
- LOCKBOX is a lockable enclosure that allows personnel to work safely and confidently on electrical equipment without fear of unexpected or unauthorized start-up.

Features

- Provisions for up to two locks.
- Accepts padlocks up to 3/8" shackle diameter.
- OSHA compliant when installed according to instructions.
- Indoor or outdoor use.
- Highly visible, safety yellow body.
- Holes for optional I.D. tag to indicate ownership.

Standard Materials

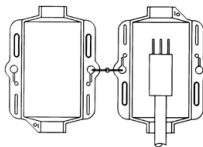
- High impact U.V. polymer



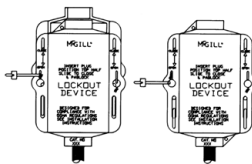
Description	Catalog Number
LOCKBOX Electrical Plug Lockout	5005-0530

Illustrated Features

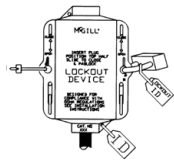
Easy to Use



1. Open LOCKBOX

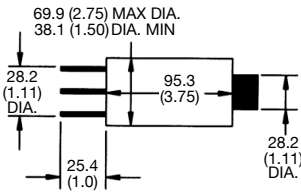


2. Close and Slide



3. Lock and tag

Dimensions in Millimeters (Inches)



Recommended maximum plug size (inches)