

DCS800 Demo Unit Light



Commissioning instructions using DriveWindow Light

General

The mains must be connected to 230 V~ or 115 V~.

Main contactor simulation is implemented.

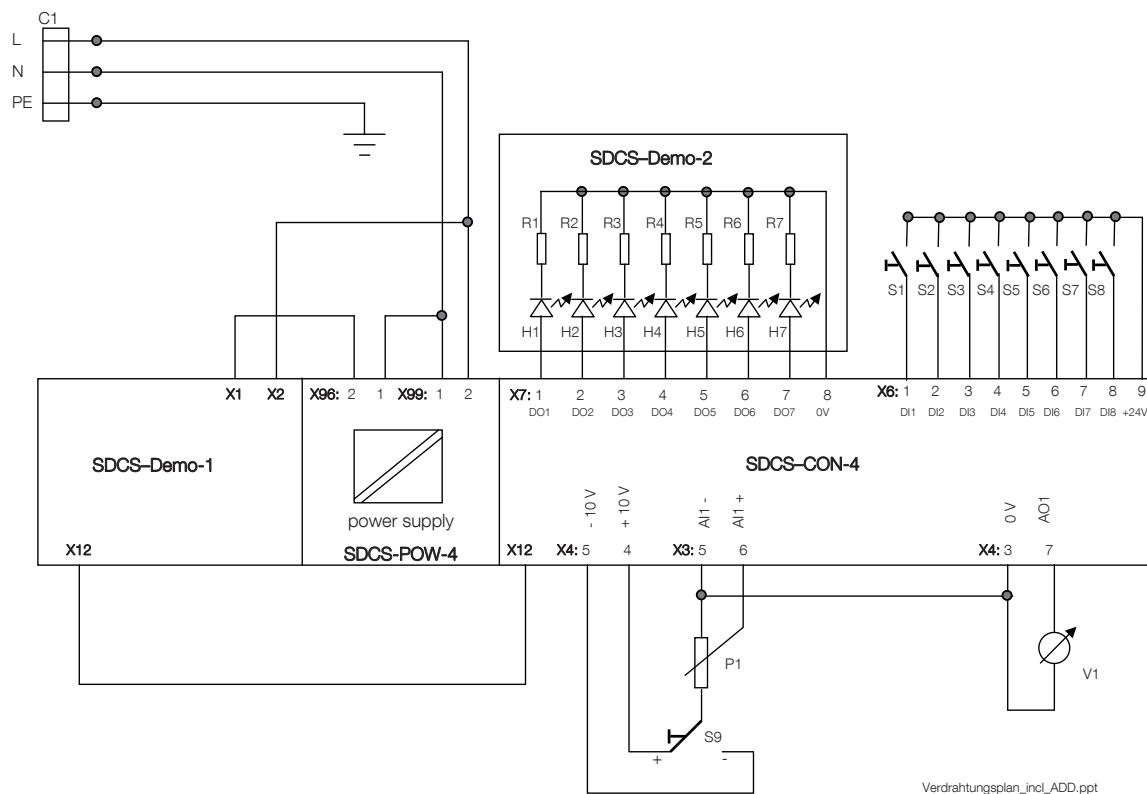
Motor and armature circuit is not implemented, thus assistants will respond with alarm A121 Autotuning failed.

Motor speed simulation is implemented

Set default (factory) settings	
Before starting all parameters must be set to default (factory)	
Parameter	Value
99.08: ApplMacro	Factory and then
99.07 ApplRestore	Yes

Name	Demo Unit Light	DCS800 default
10.06: MotFanAck	NotUsed	DI2
10.08: Off2	NotUsed	DI4
10.20: ConvFanAck	NotUsed	DI1
10.21: MainContAck	NotUsed	DI3
15.01: IndexAO1	503	0
16.09: USI Sel	Extended	Compact
20.03: ZeroSpeed [rpm]	25	75
21.02: Off1Mode	CoastStop	RampStop
21.04: E StopMode	RampStop	CoastStop
30.27: LocalLossCtrl	CoastStop	RampStop
30.28: ComLossCtrl	CoastStop	RampStop
30.30: FaultStopMode	CoastStop	RampStop
30.31: ExtFaultSel	DI1	NotUsed
30.32: ExtAlarmSel	DI2	NotUsed
34.01: DispParam1Sel	104	101
34.08: DispParam2Sel	213	114
34.15: DispParam3Sel	112	116
43.02: CurSel	CurZero	CurRef311
50.03: M1SpeedFbSel	External	EMF
83.01: AdapProgCmd	Start	Stop
83.04: TimeLevSel	5ms	Off
84.04: Block1Type	Filter	NotUsed
84.05: Block1In1	218	0
84.06: Block1In2	2000	0
84.08: Block1Attrib	0X2000	0X0
84.09: Block1Output	980	0
86.01: Block1Out	104	0
97.01: TypeCode	76 (S02-0025)	1
99.02: M1NomVolt [V]	230	350
99.03: M1NomCur [A]	4	0
99.09: DeviceName	Demo 1	
99.10: NomMainsVolt [V]	115 for 115 V supply 230 for 230 V supply	400
99.12: M1UsedFexType	NotUsedOnBoard	
99.15: Pot1	-10	0
99.16: Pot2	-60	0
99.17: SqrWavPeriod [s]	2	10

DCS800 Demo Unit Light diagram, ratings



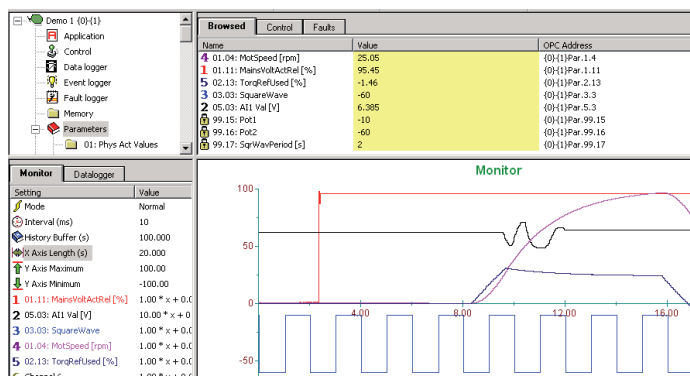
Dimensions

W x D x H	477x365x112 (mm)	18.78x14.37x4.41 (inch)
Weight:	7 kg	15.4 lbs
Ordering code:	3ADT203037R0001	



Cables included:

- 230 V mains supply cable Europe
- 115 V mains supply cable US
- POF for Drive Window connection
- RS232 Serial PC cable



Presentation and training

- DriveWindow Light
- DriveWindow
- Adaptive Program (AP), CoDeSys
- DCS800 Assistants

Testing

- Fieldbus interface

Contact us

ABB Automation Products

Wallstadter Straße 59

68526 Ladenburg, Germany

Phone: +49 (0) 6203 71 0

Fax: +49 (0) 6203 71 7609

dc-drives@de.abb.com

www.abb.com/motors&drives